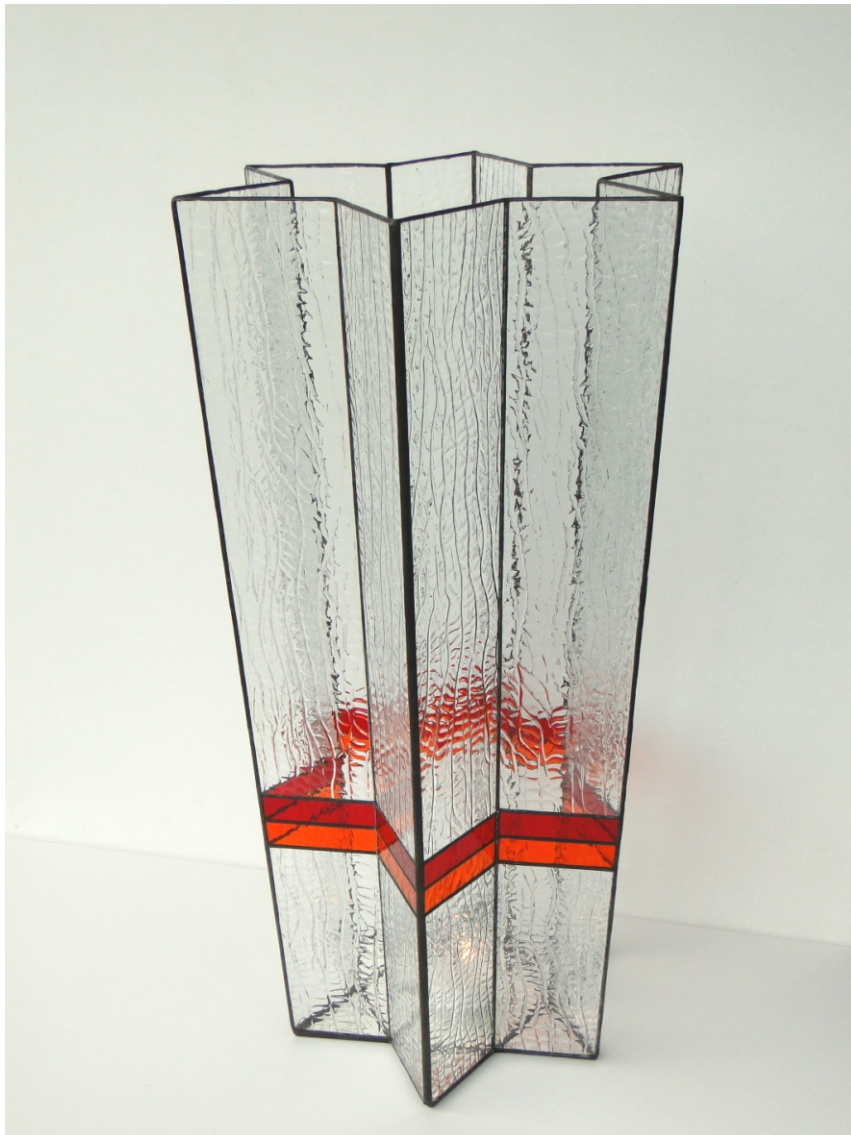


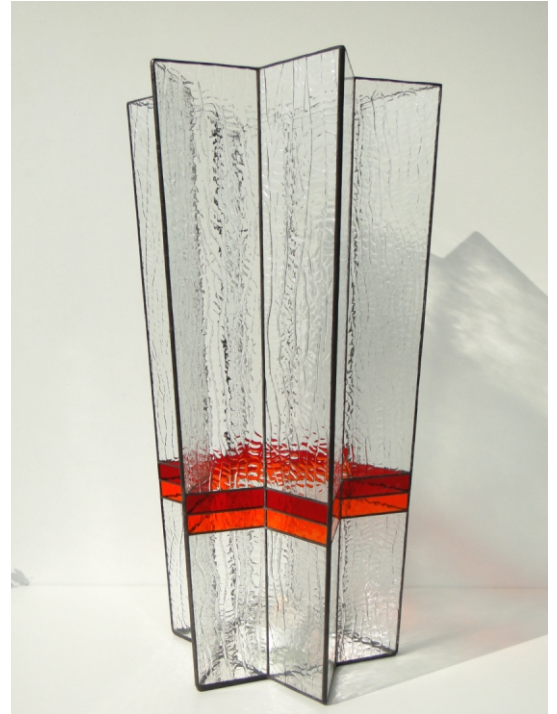
# CandleLite - Star Calyx

© [www.inspiration-for-glass.com](http://www.inspiration-for-glass.com)



CandleLite " Star Calyx " approx. 25 / 33 x 60 cm ( 10" / 12" x 24" )

## CandleLite " Star Calyx "



CandleLite " Star Calyx " approx. 25 / 33 x 60 cm ( 10" / 12" x 24" )

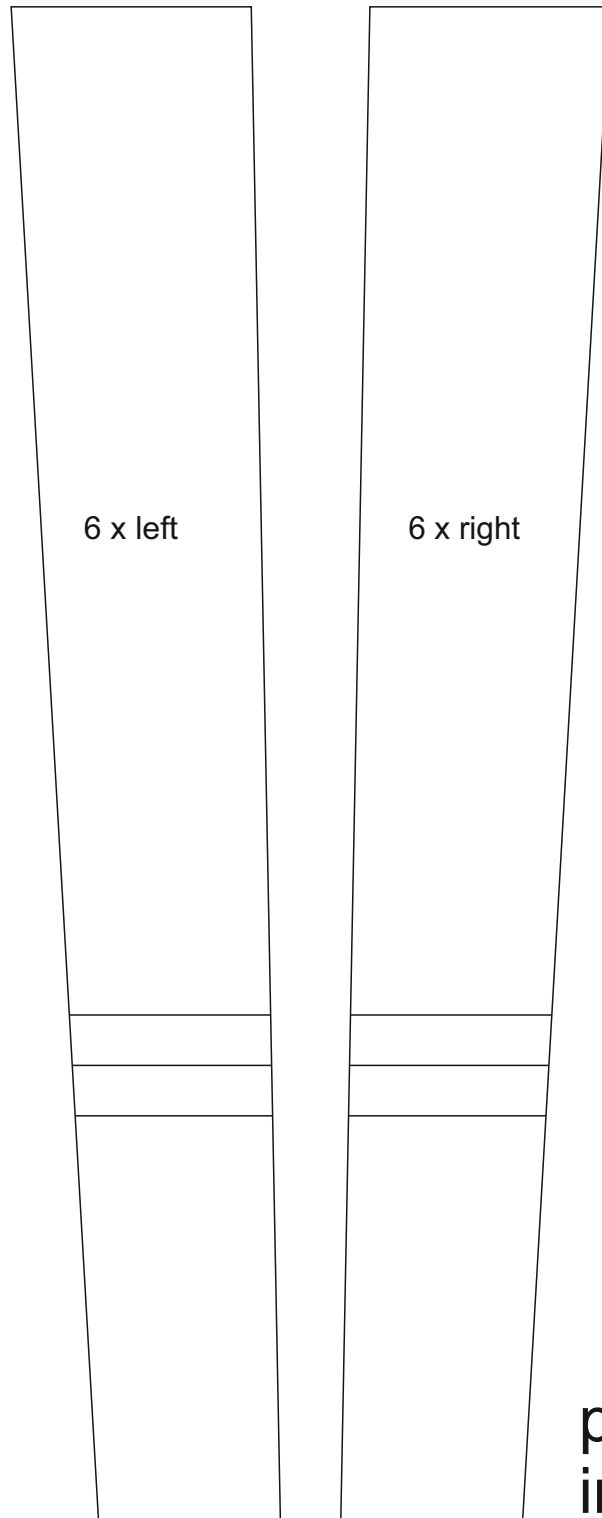
### Material for one light:

- textured clear glass
- 2 different colors cathedral glass
- mirror for the bottom
- 



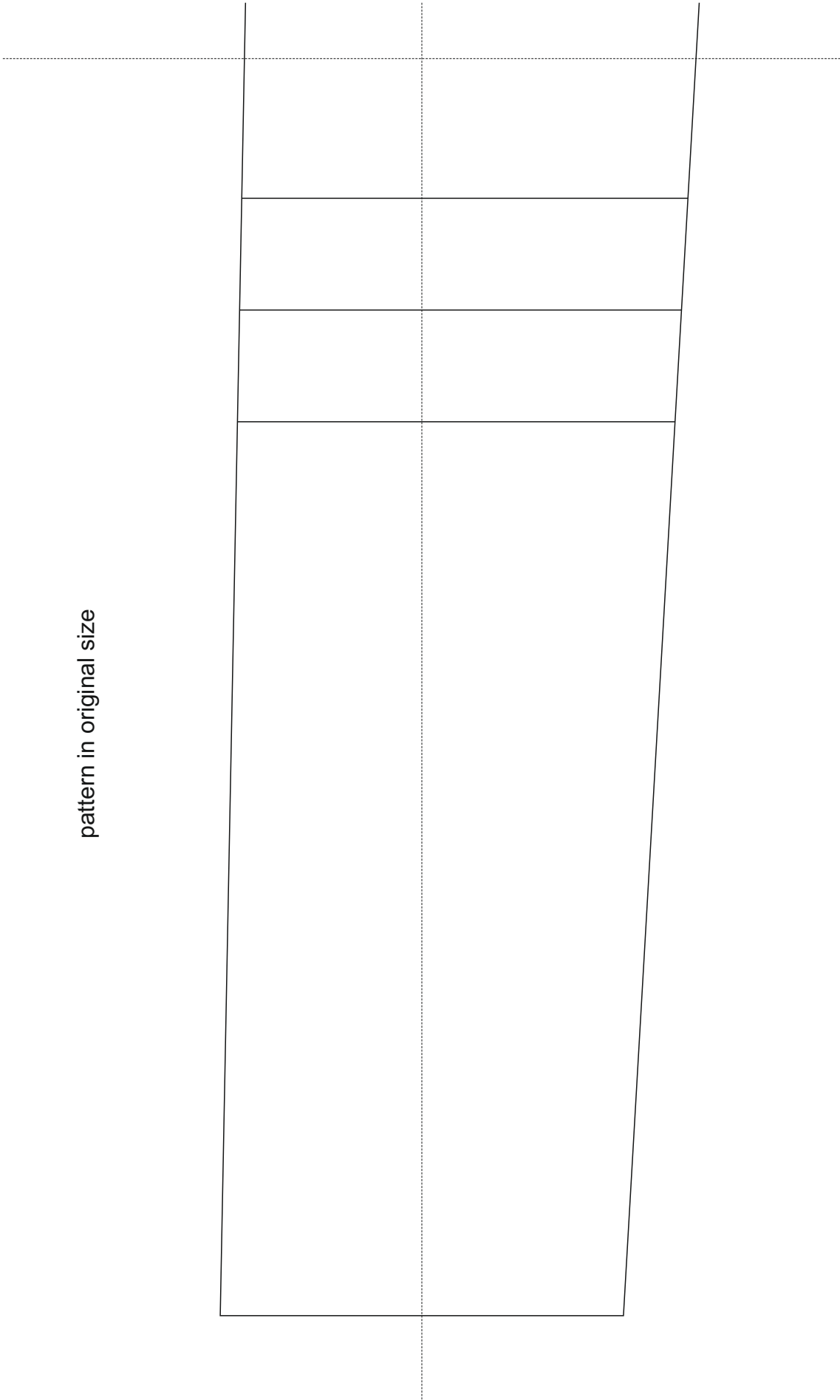
This example shows:

- Spectrum 100 CZ, clear
- Spectrum 151 RR, red
- Spectrum 171 RR, orange

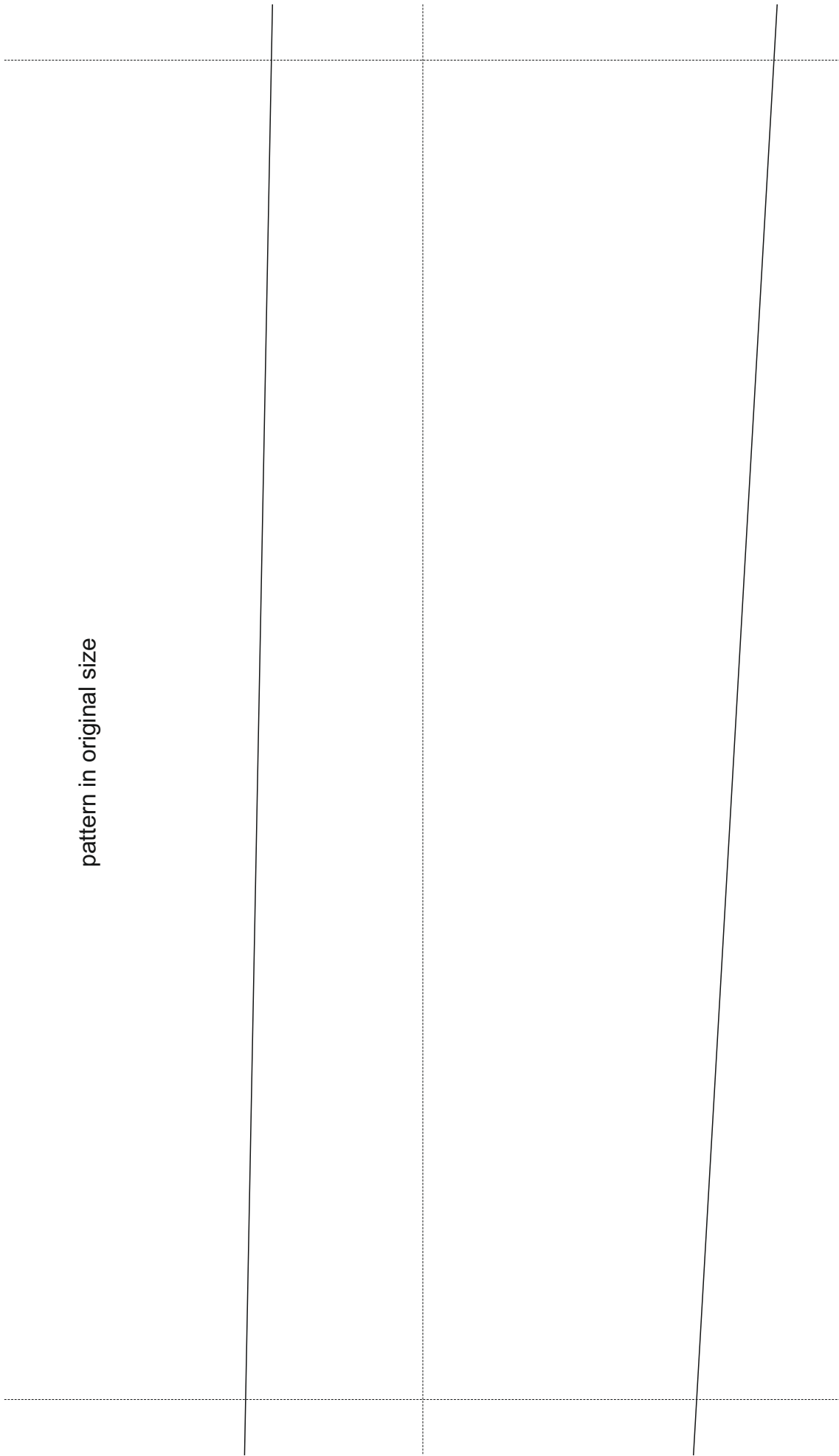


CandleLite " Star Calyx " approx. 25 / 33 x 60 cm ( 10" / 12" x 24" )

pattern in original size

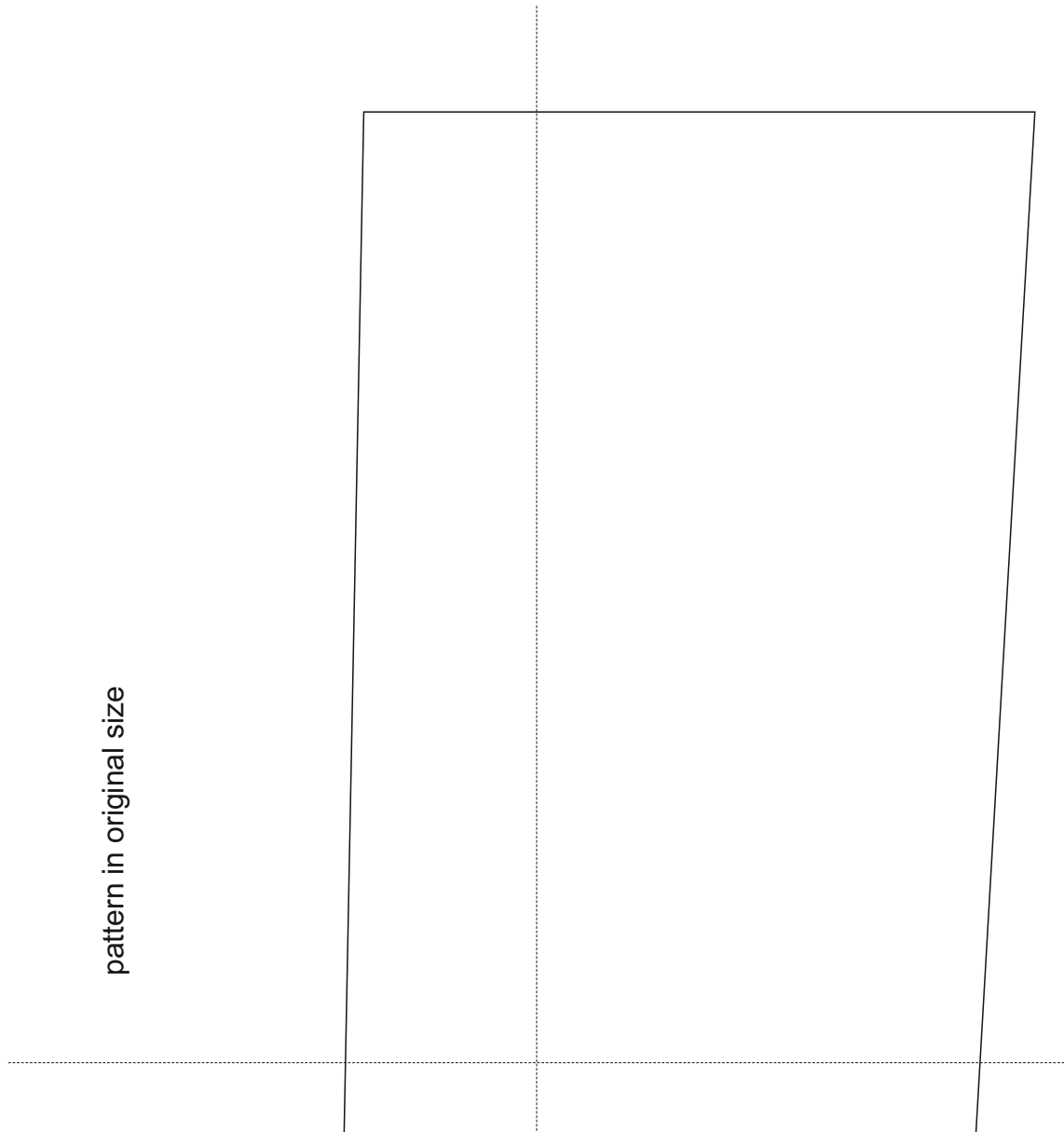


CandleLite " Star Calyx " approx. 25 / 33 x 60 cm ( 10" / 12" x 24" )

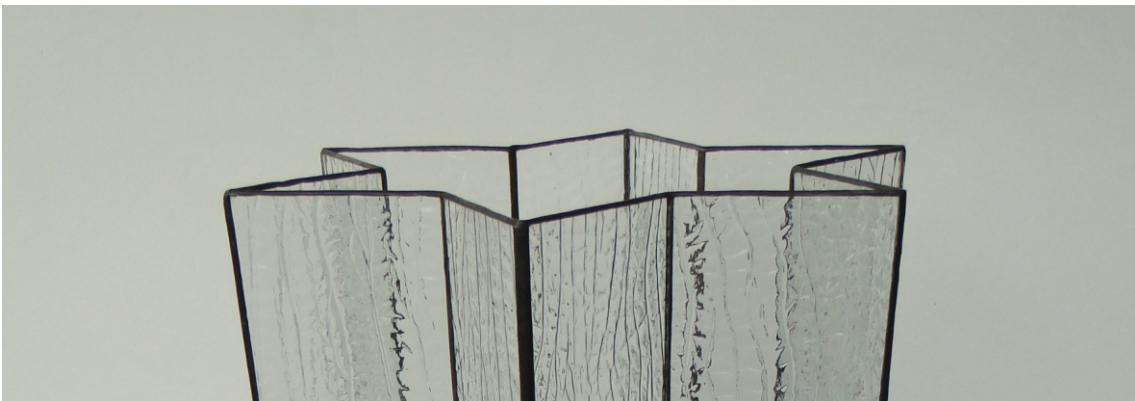


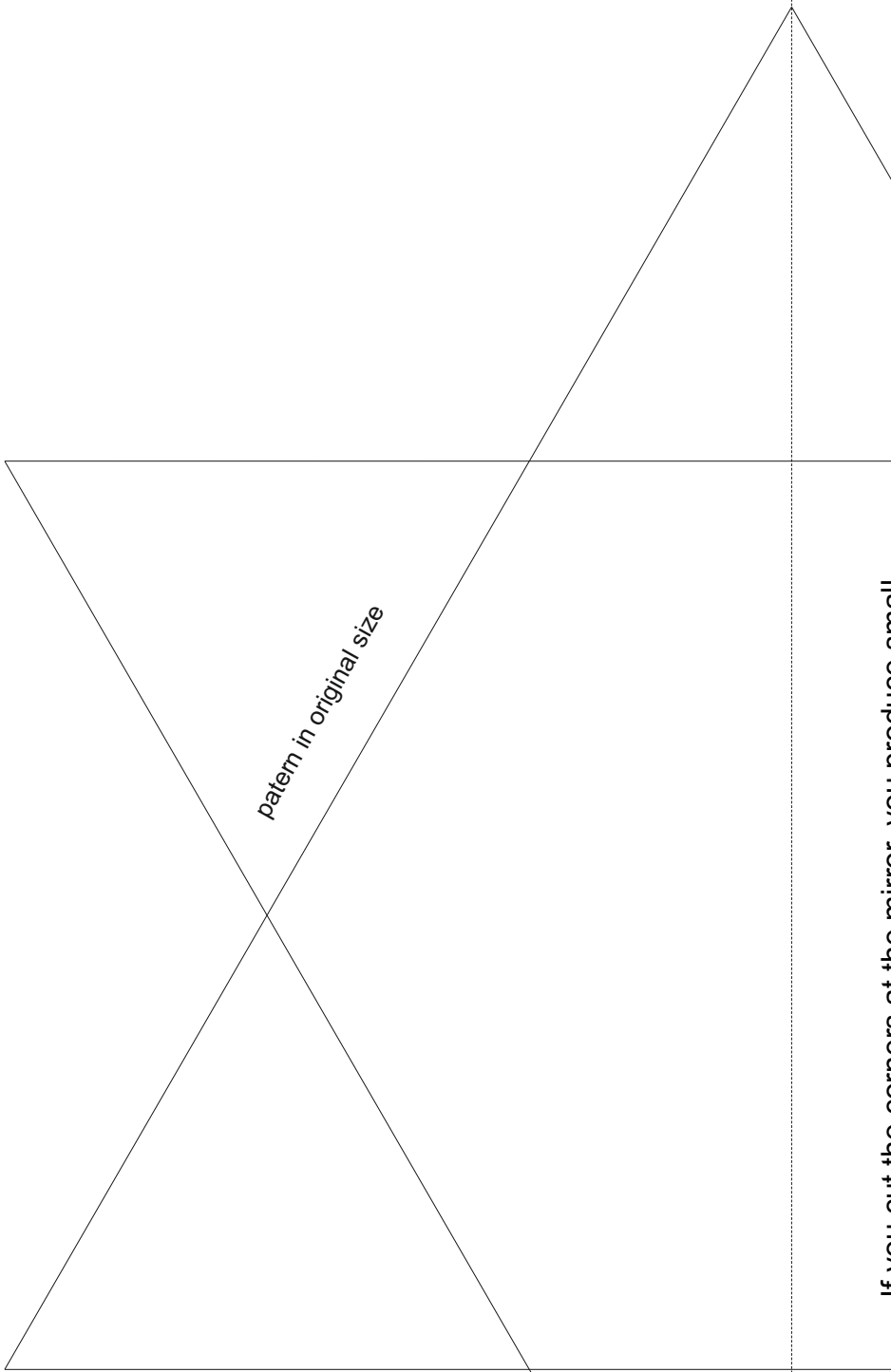
pattern in original size

CandleLite " Star Calyx " approx. 25 / 33 x 60 cm ( 10" / 12" x 24" )



Solder all around at the top a wire for reinforcement.





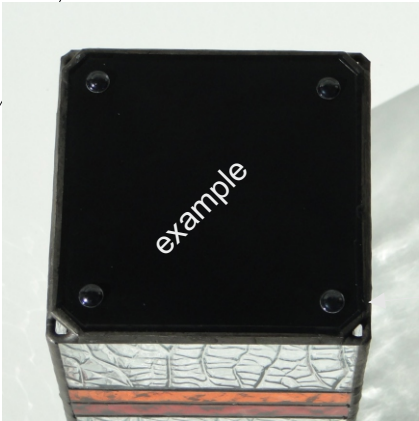
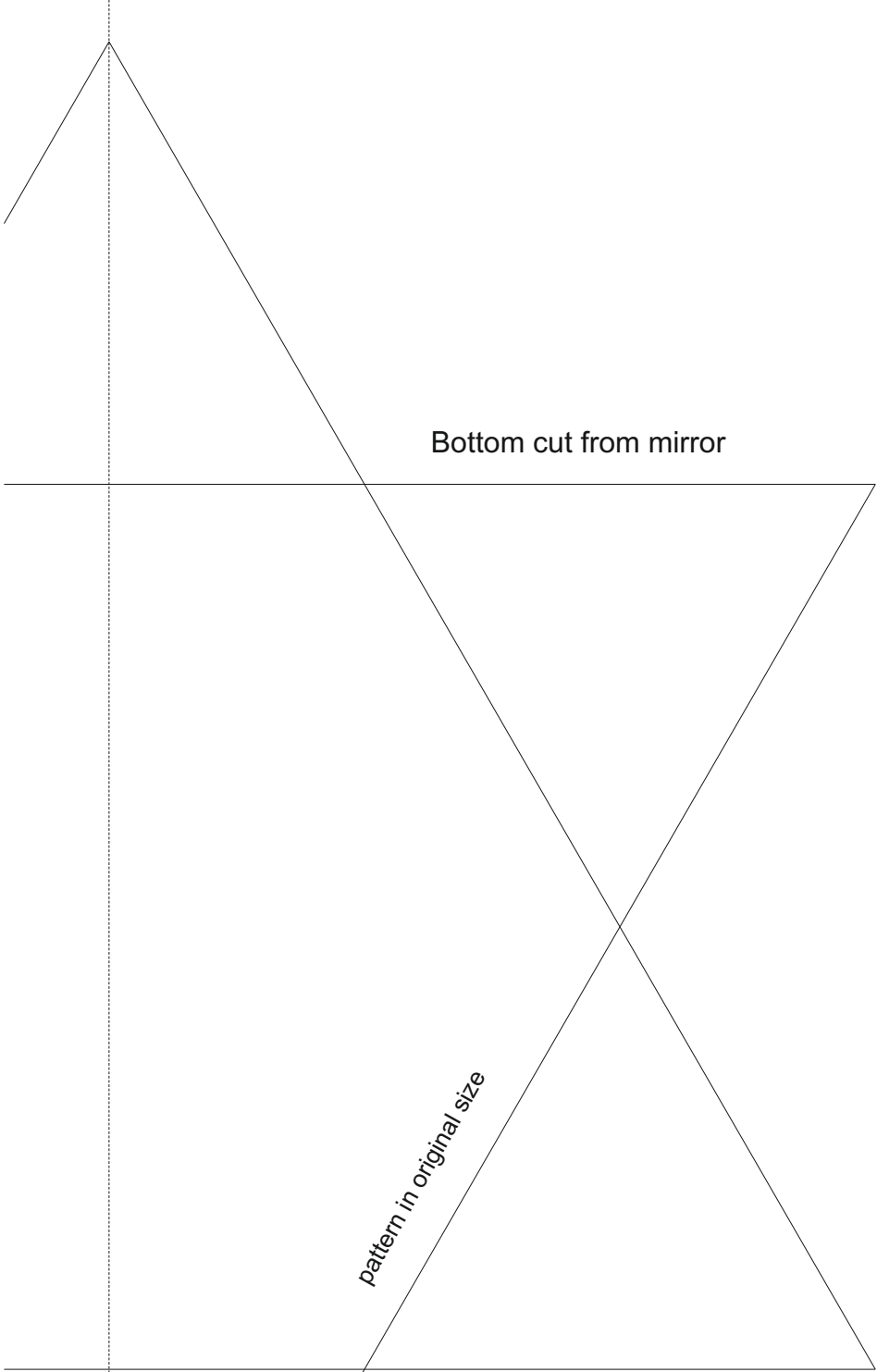
If you cut the corners at the mirror, you produce small air holes in the bottom and later the candle burns better.

I recommend to coat the mirror edge with mirror protection varnish. It is also useful to make the copper foil overlap at the mirror's coated side a little wider.

Bottom cut from mirror



here the version as a floor lamp with electric light and outlet for the power chord. for more details please go to the chapter " floor lamps "



After the final cleaning of the light I recommend to paint the bottom - this looks more professional than the usual mirror coating.

The rubber bumps ensure the perfect stand even on sensitive ground.

bumps