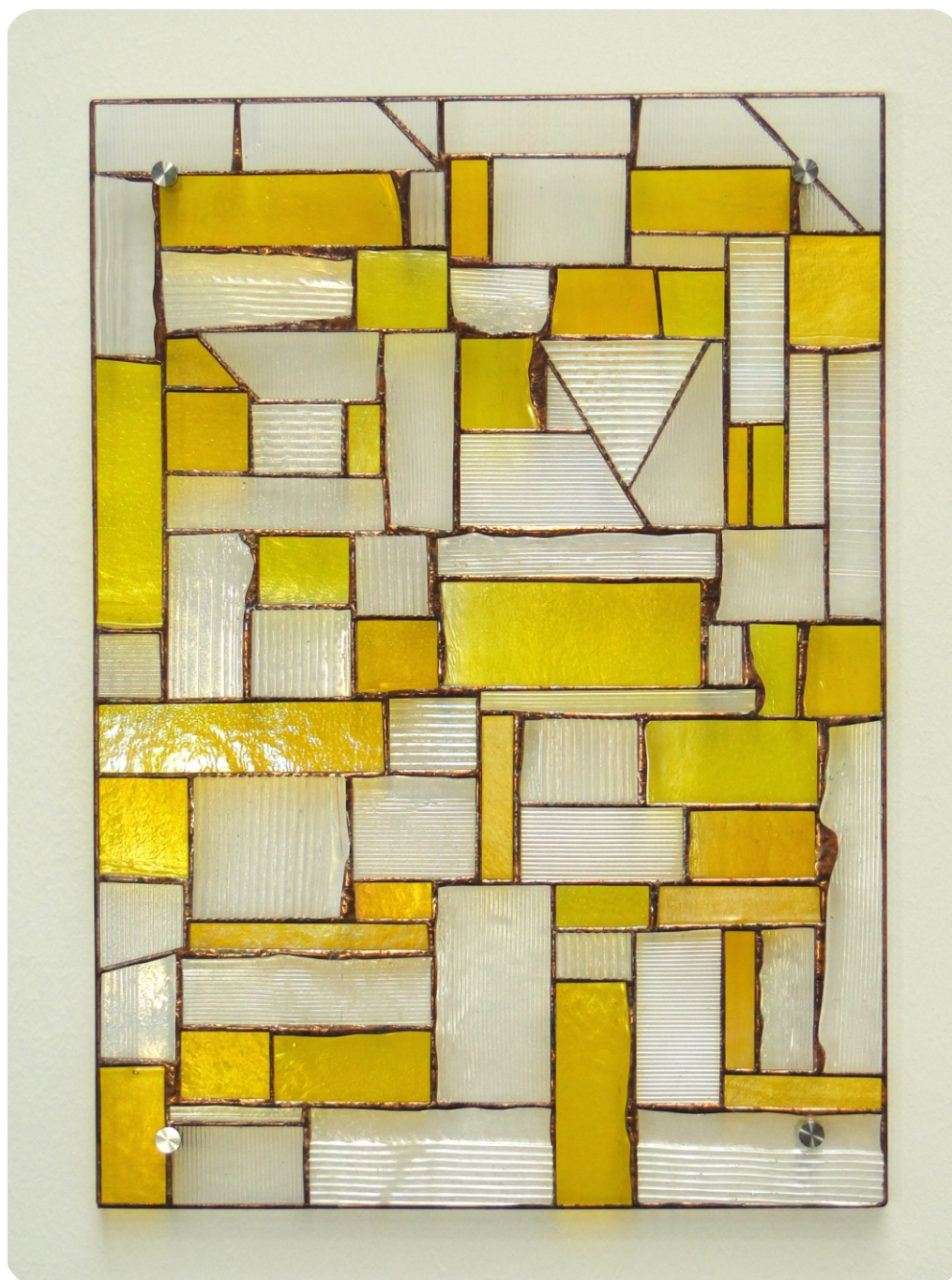


Wall Picture - Inspiration Refreshment

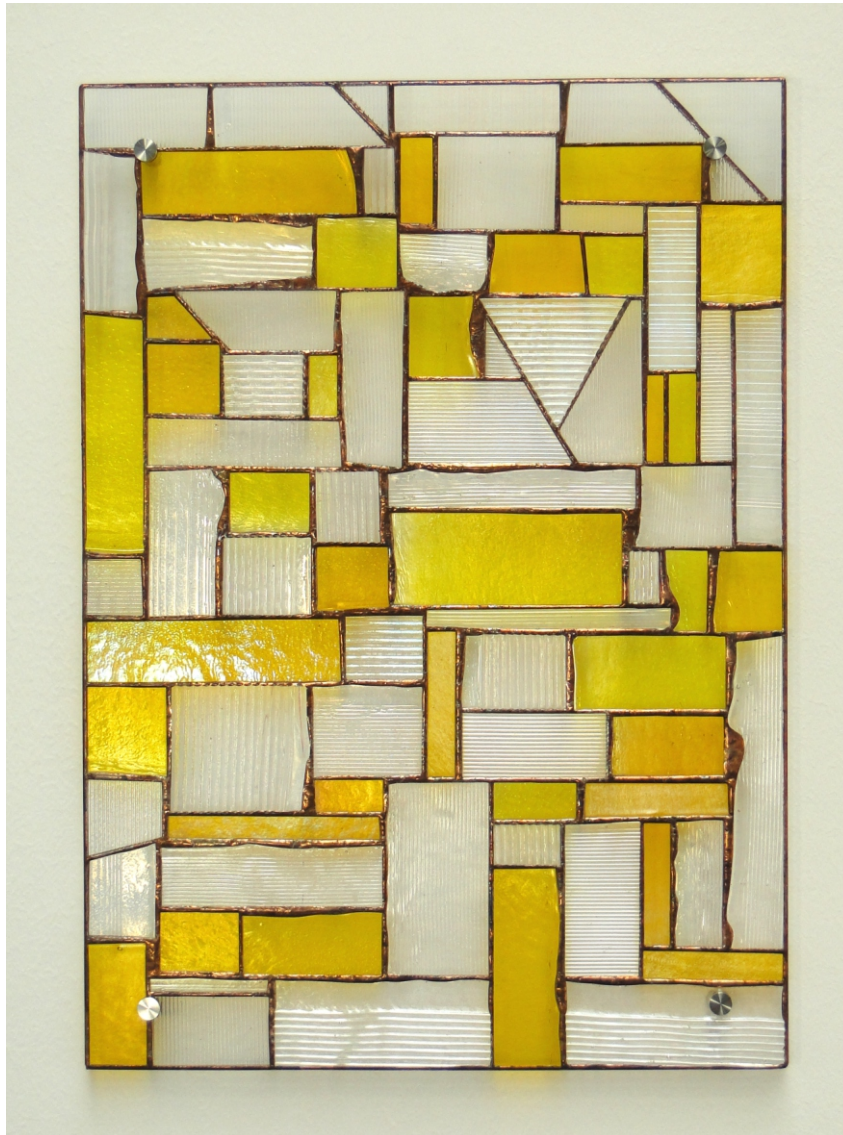
© www.inspiration-for-glass.com



For a stronger construction please sold around the picture with two layers of reinforcing bar of 3,6x1mm (4220000)

Wall picture

Original size approx. 43 x 60 cm / 17" x 24"



For a stronger construction please sold around the picture with two layers of reinforcing bar of 3,6x1mm (4220000)

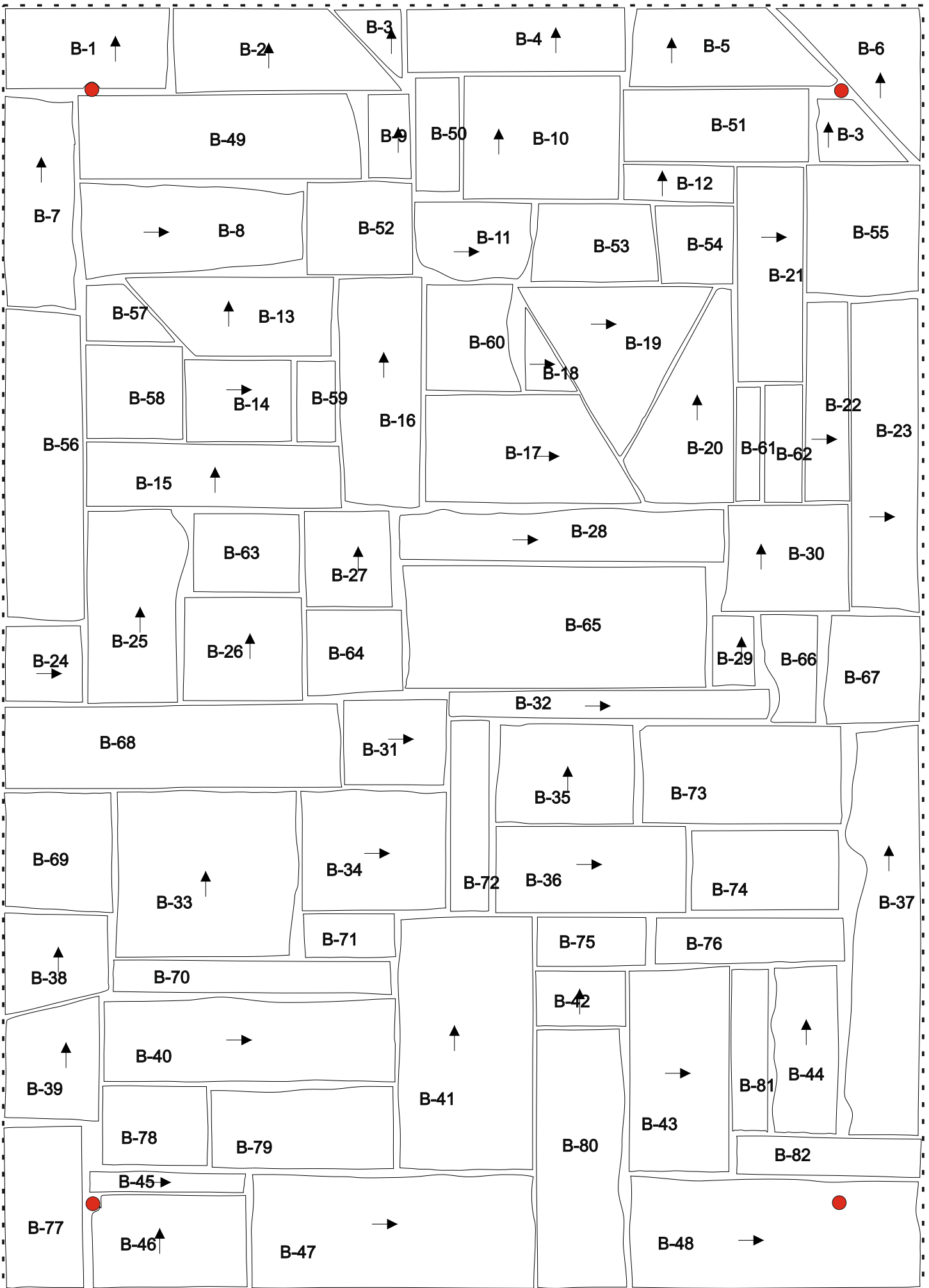
“ INSPIRATION - REFRESHMENT “


Material:

piece 1 - 36 = clear textured glasses (the arrows point out the texture flow)
piece 37 - 52 = stained glass

Material as shown in the original picture:

Bullseye : 1101-44Fi, clear iridescent, texture 'reed'
Bullseye : 1101-46Fi, clear iridescent, texture 'accordion'
Bullseye : 1101-48Fi, clear iridescent, texture 'prismatic'
Bullseye : 1320-31Fi, transparent warm yellow iridescent,
Wall mounting: 4 x distance holder 4596100



 = here you drill a hole of about 6-7mm in diameter. You will need the four holes, for mounting the glass picture onto the wall.
wall mounting with: distance holder 4596100

