

# Boats of the World - Odessa

© [www.inspiration-for-glass.com](http://www.inspiration-for-glass.com)



## CandleLite " Odessa "



CandleLite Boat " Odessa " approx. 6 - 8 x 22 cm ( 2,5 - 3 x 9" )

### Material for one light:

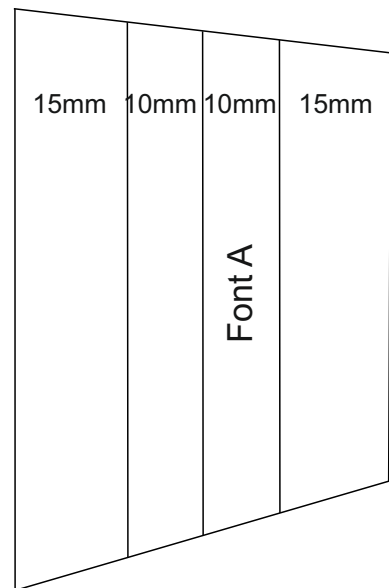
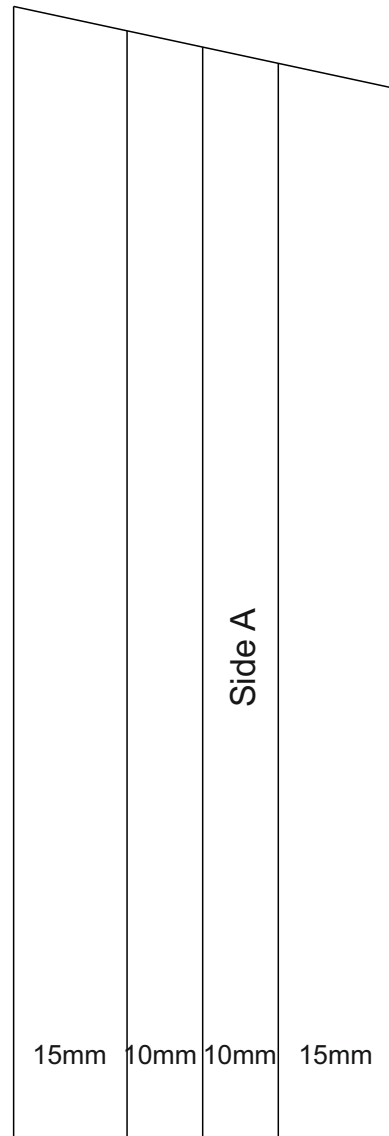
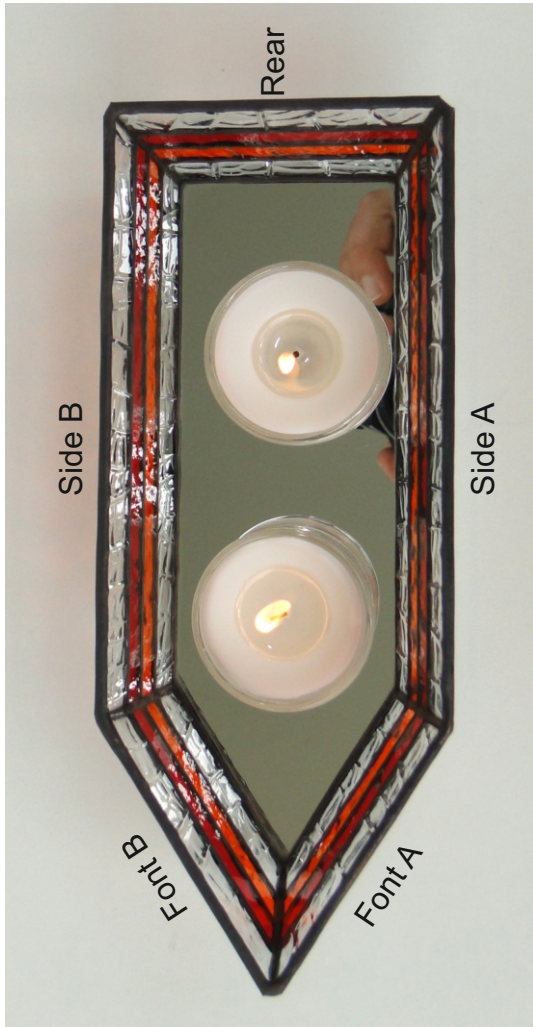
- textured clear glass
- 2 different colors cathedral glass
- mirror for the bottom



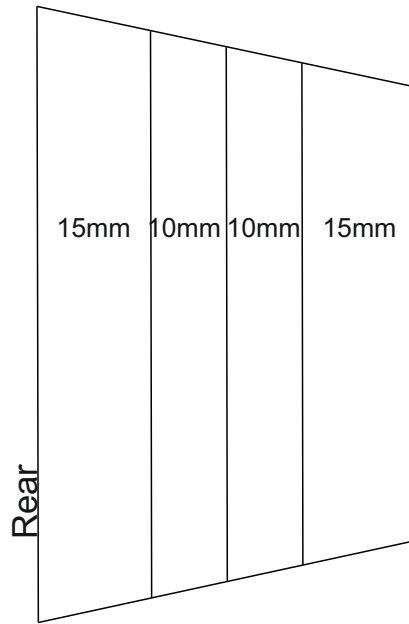
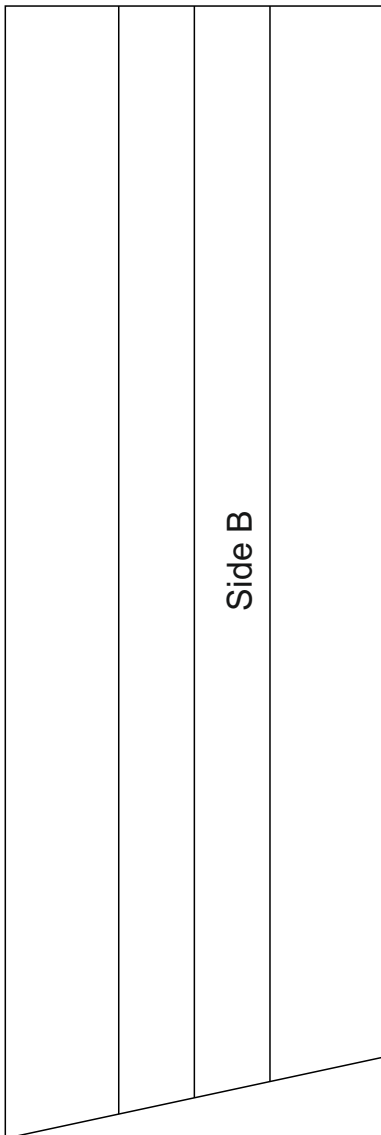
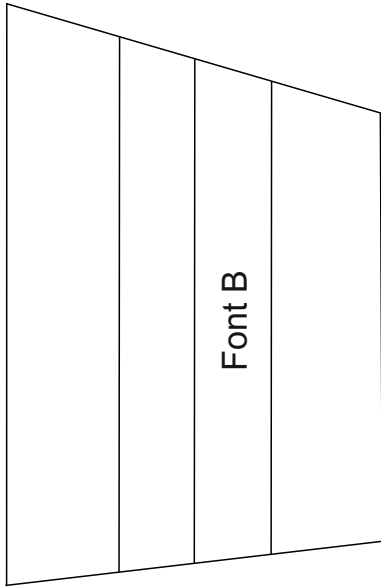
This example shows:

- Spectrum 100 CZ, clear
- Spectrum 151 RR, red
- Spectrum 171 RR, orange

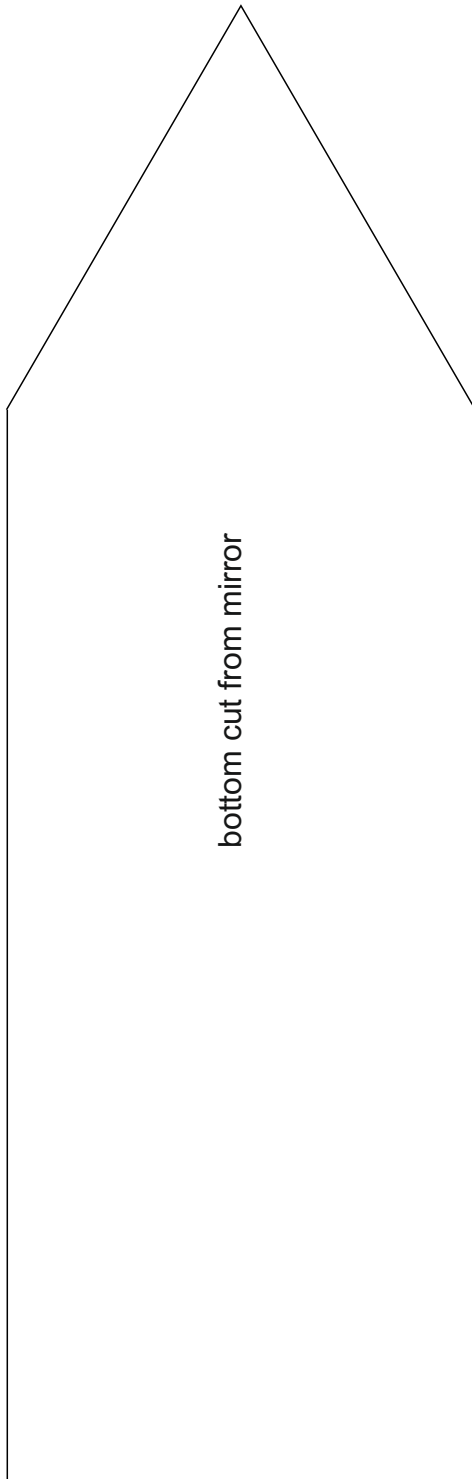
pattern in original size



pattern in original size



pattern in original size

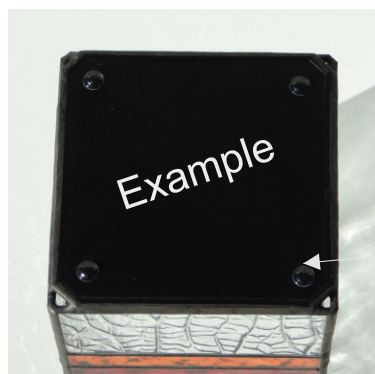


bottom cut from mirror



Bottom cut from mirror

I recommend to coat the mirror edge with mirror protection varnish. It is also useful to make the copper foil overlap at the mirror's coated side a little wider.



After the final cleaning of the light I recommend to paint the bottom - this looks more professional than the usual mirror coating.

The rubber bumps ensure the perfect stand even on sensitive ground.

bumps