

Candle Holder - Light M

© www.inspiration-for-glass.com



Candleholder " Light "



Candle Holder " Light "

size approx. 16 x 16 x 31 cm (6" x 6" x 12")

Material for one candle holder:

64 x 85 120 00 bevel 1,5 x 1,5"
(38 x 38 mm)

color 1 : 16 pcs. 38 x 38 mm

color 2 : 16 pcs. 38 x 38 mm

color 3 : 16 pcs. 38 x 38 mm

color 4 : 16 pcs. 38 x 38 mm

bottom: silver mirror approx. 16x16cm



Material for one candle holder:

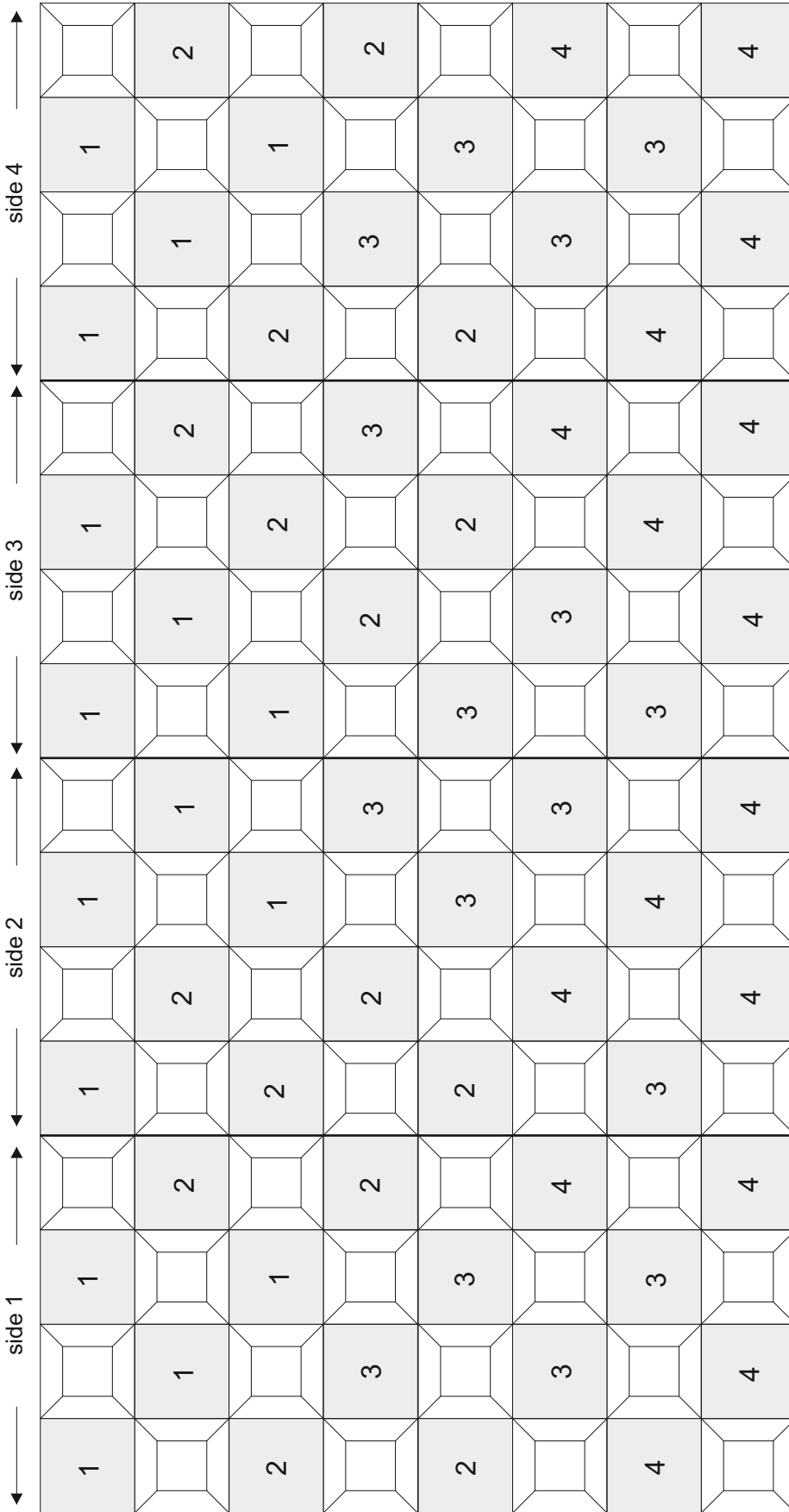
Glass selection as shown in the example:

Wissmach 0001 Mystic, .

Wissmach 0002 Florentine

Glue chip glass

Mirror for the bottom



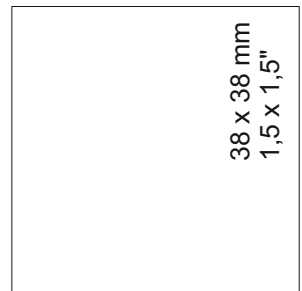
Material for one candle holder:

64 x 85 120 00 bevel 1,5 x 1,5"
(38 x 38 mm)

bottom: silver mirror approx. 16x16cm.

colored glass:

- color 1 : 16 pcs. 38 x 38 mm
- color 2 : 16 pcs. 38 x 38 mm
- color 3 : 16 pcs. 38 x 38 mm
- color 4 : 16 pcs. 38 x 38 mm





"red-hot"

64 bevels 38 x 38 mm (1,5" x 1,5")
 item no. 85 120 00
 bottom: mirror 3mm

glass:

pale amber	Bullseye 1437-31 Fi	16 pcs. 38 x 38 mm
yellow	Bullseye 1320-31 Fi	16 pcs. 38 x 38 mm
orange	Bullseye 1125-31 Fi	16 pcs. 38 x 38 mm
red	Bullseye 1122-31 Fi	16 pcs. 38 x 38 mm



"Caribbean Flair"

64 bevels 38 x 38 mm (1,5" x 1,5")
 item no. 85 120 00

bottom: mirror 3mm

glass:

pale amber	Bullseye 1437-31 Fi	16 pcs. 38 x 38 mm
aquamarine	Bullseye 1116-31 Fi	16 pcs. 38 x 38 mm
turquoise	Bullseye 1417-31 Fi	16 pcs. 38 x 38 mm
blue	Bullseye 1464-31 Fi	16 pcs. 38 x 38 mm



"Fashion"

64 bevels 38 x 38 mm (1,5" x 1,5")
 item no. 85 120 00

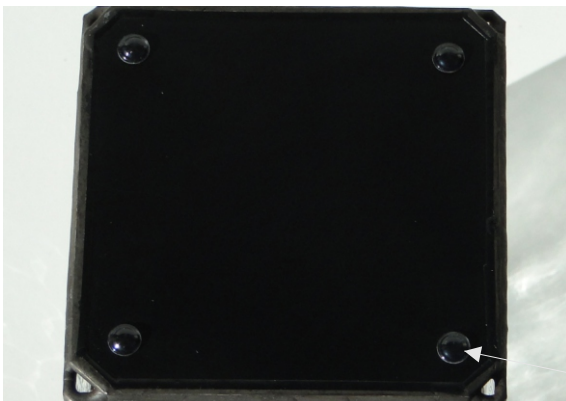
bottom: mirror 3mm

glass:

green	Bullseye 1426-31 Fi	16 pcs. 38 x 38 mm
aubergine	Bullseye 1234-31 Fi	16 pcs. 38 x 38 mm
orange	Bullseye 1125-31 Fi	16 pcs. 38 x 38 mm
pink	Bullseye 1311-31 Fi	16 pcs. 38 x 38 mm

Bullseye 1234-31 Fi + 1311-31Fi were fired at fuse temperature, to achieve the target color.

Example bottom with ventilation holes



Take mirror for the bottom !

After the final cleaning of the vase I recommend to paint (spray) the bottom - this looks more professional than the usual mirror coating.

The rubber bumps ensure the perfect stand even on sensitive ground.

bumps

Take mirror for the bottom. I recommend the cutting edge in front of the mirror with foiling protective lacquer to pocket. It is also useful to overlap the copper foil on the coated side a little further to let. If you cut off the corners of the base plate, small air holes are formed so that the candle later beautiful burns.