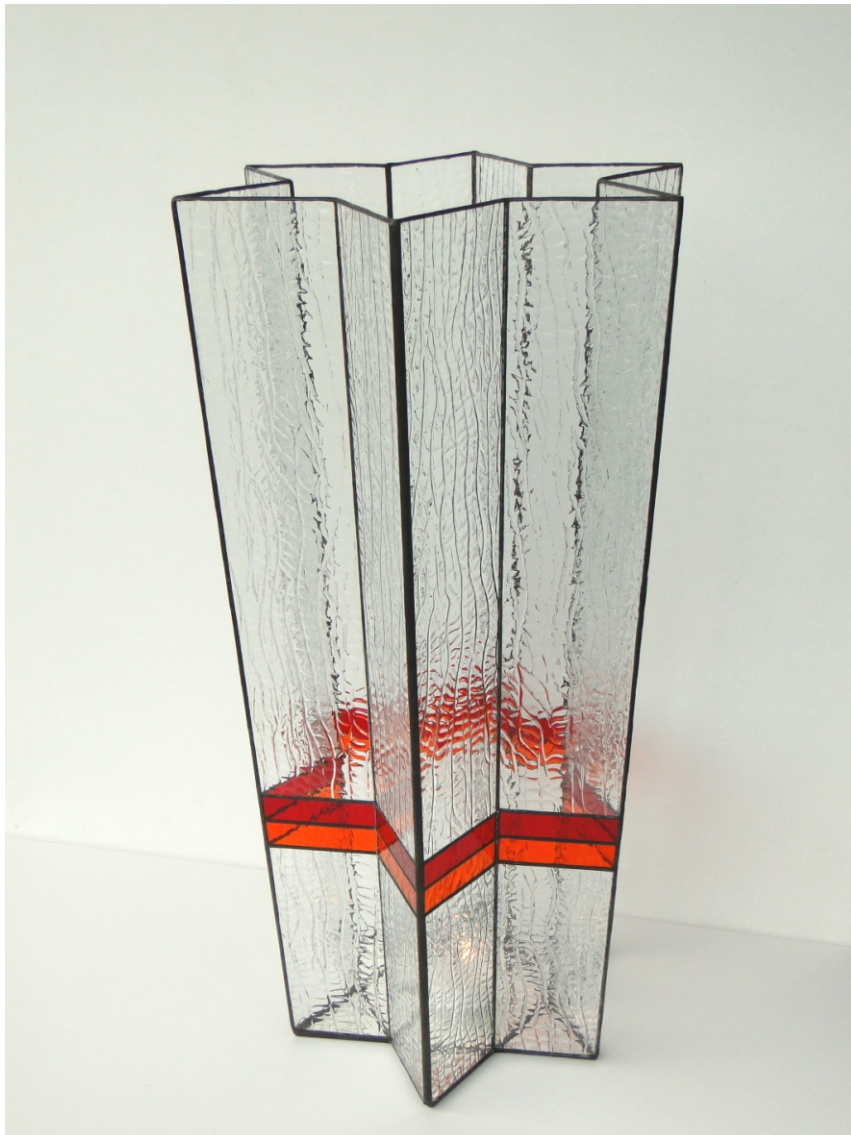
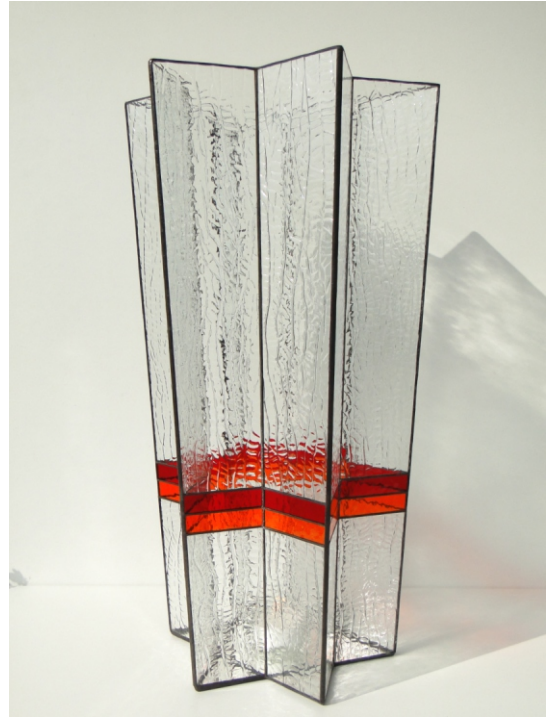


CandleLite - Star Calyx

© www.inspiration-for-glass.com



CandleLite " Star Calyx "



CandleLite " Star Calyx " approx. 25 / 33 x 60 cm (10" / 12" x 24")

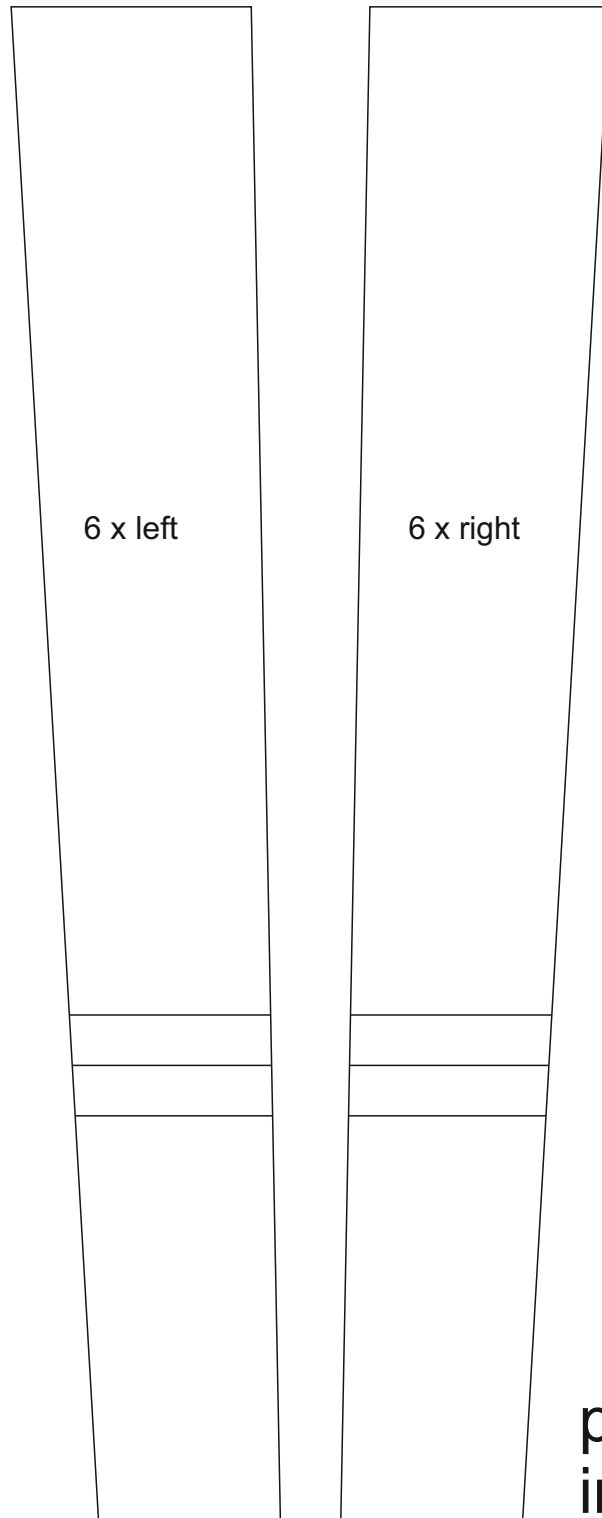
Material for one light:

- textured clear glass
- 2 different colors cathedral glass
- mirror for the bottom
-

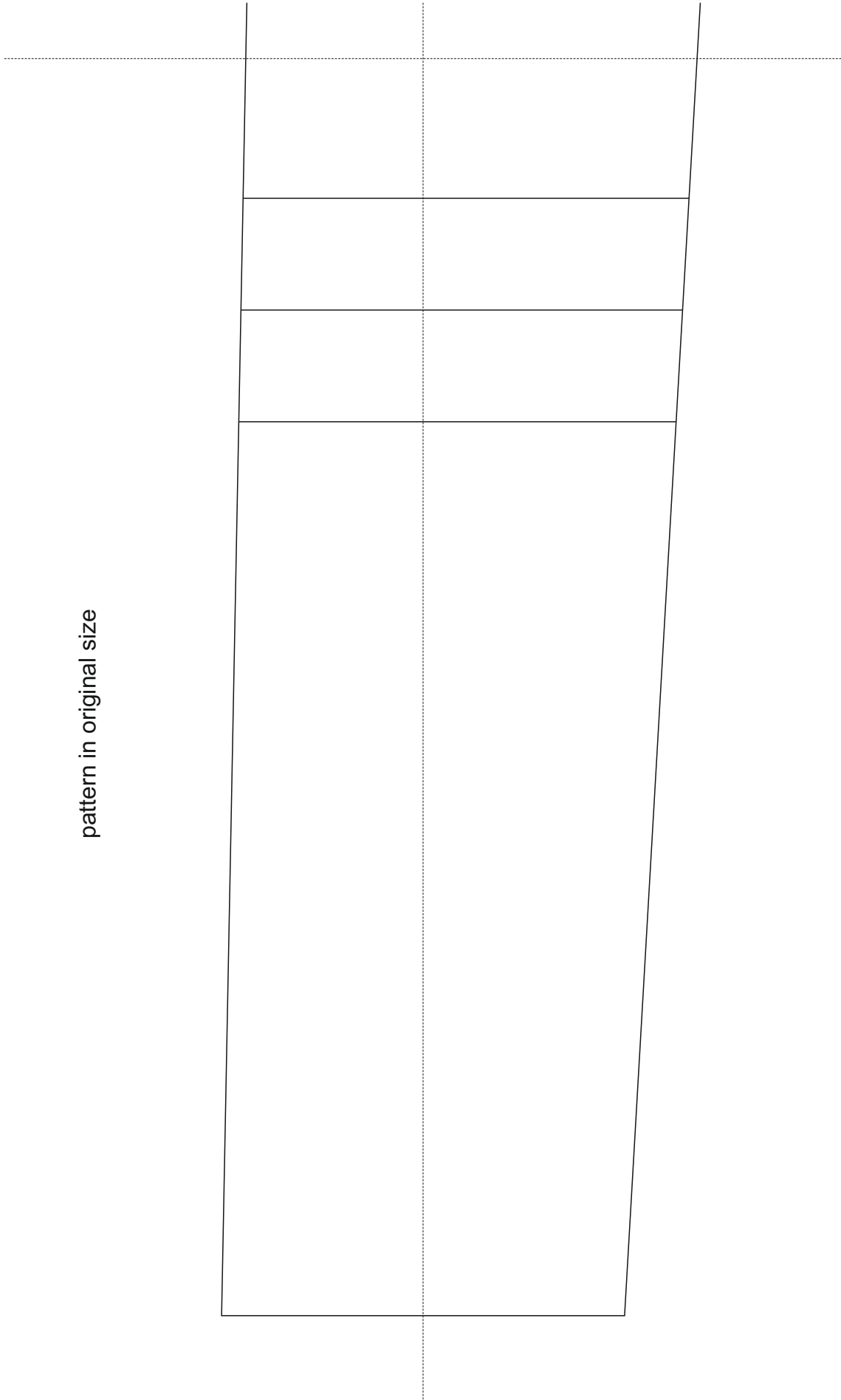


This example shows:

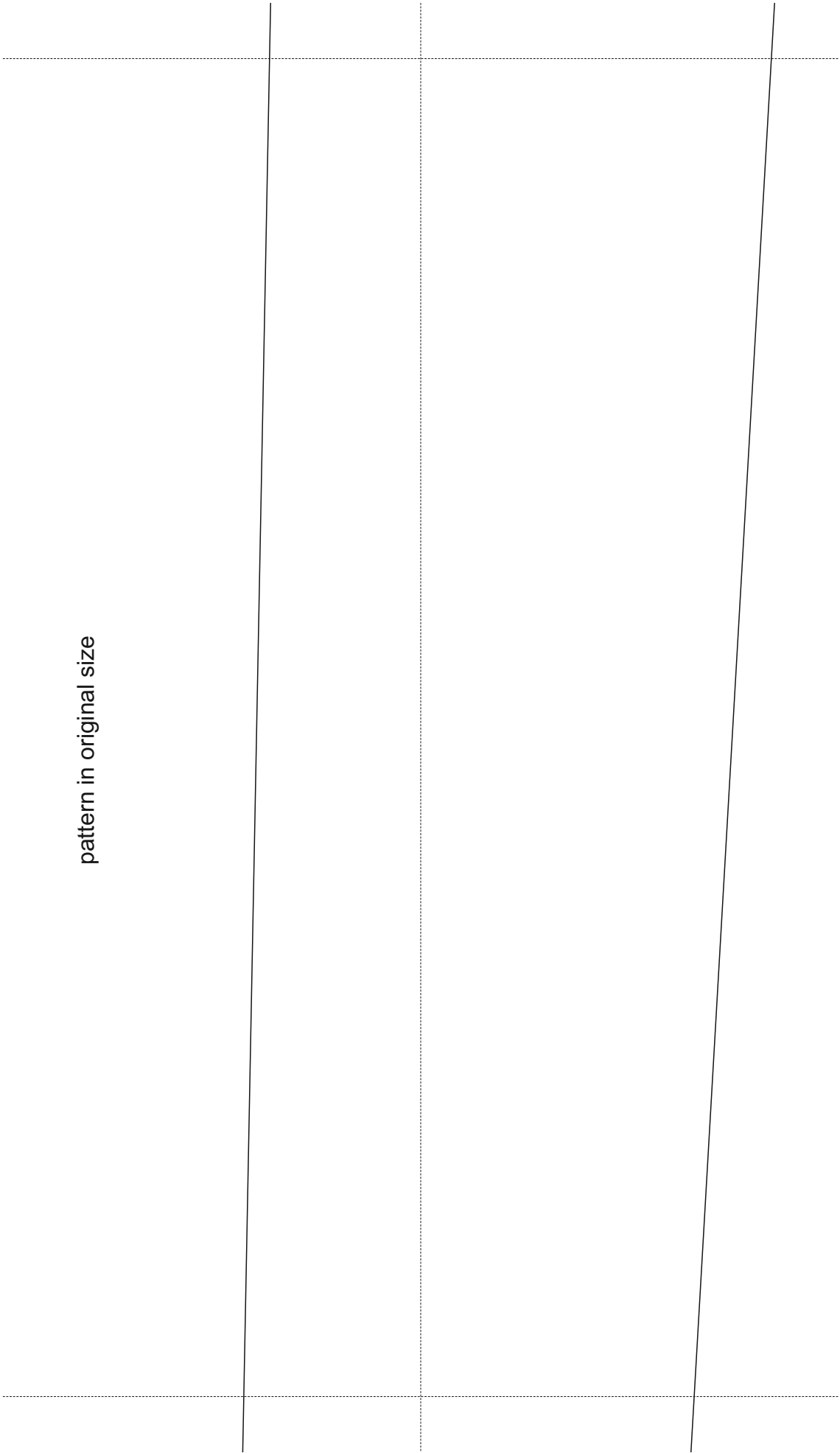
- Spectrum 100 CZ, clear
- Spectrum 151 RR, red
- Spectrum 171 RR, orange

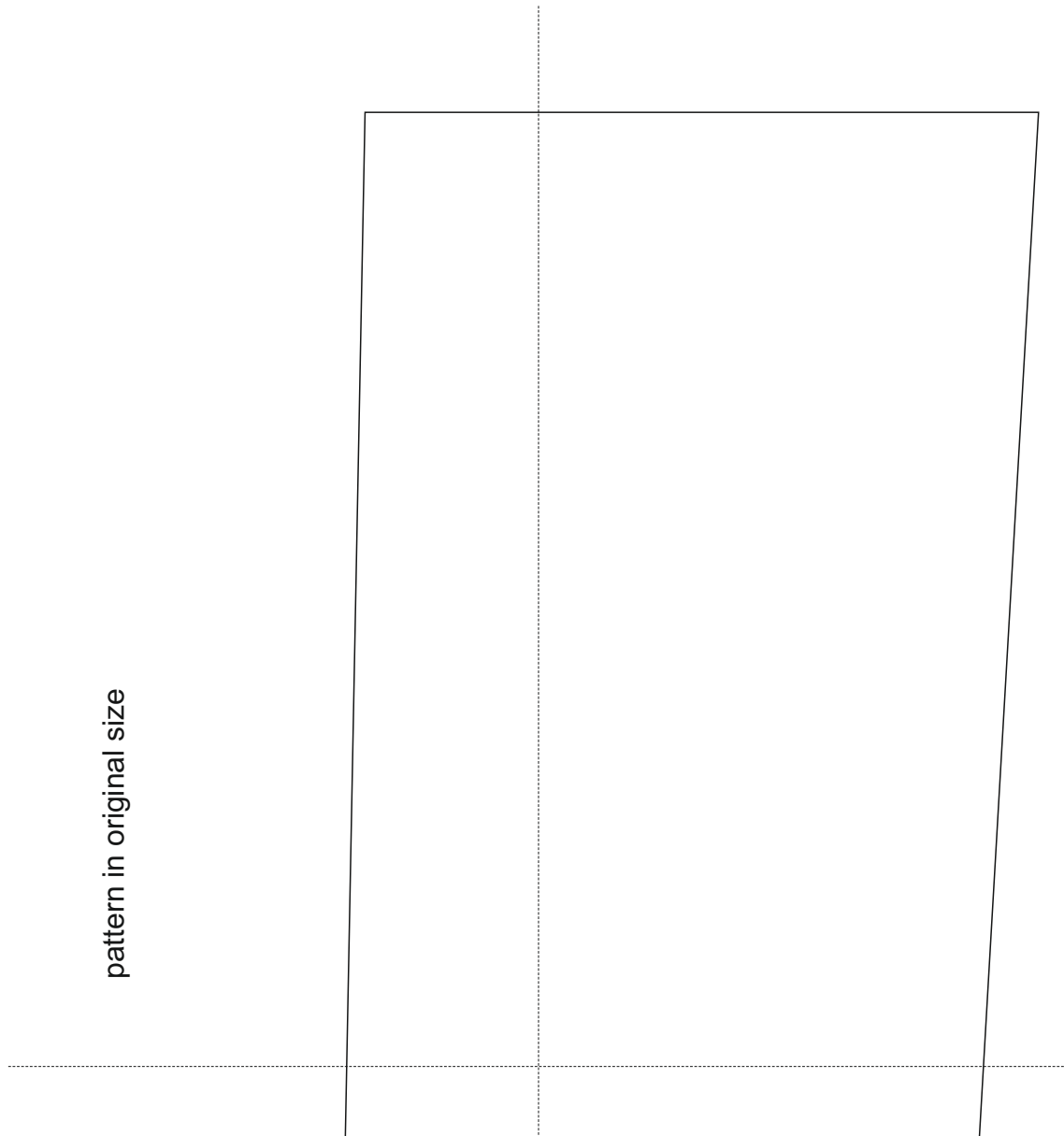


pattern in original size

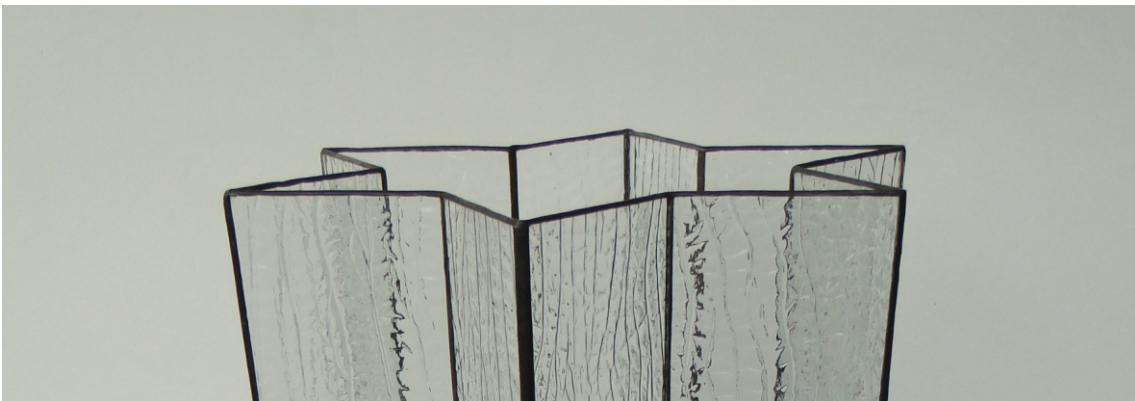


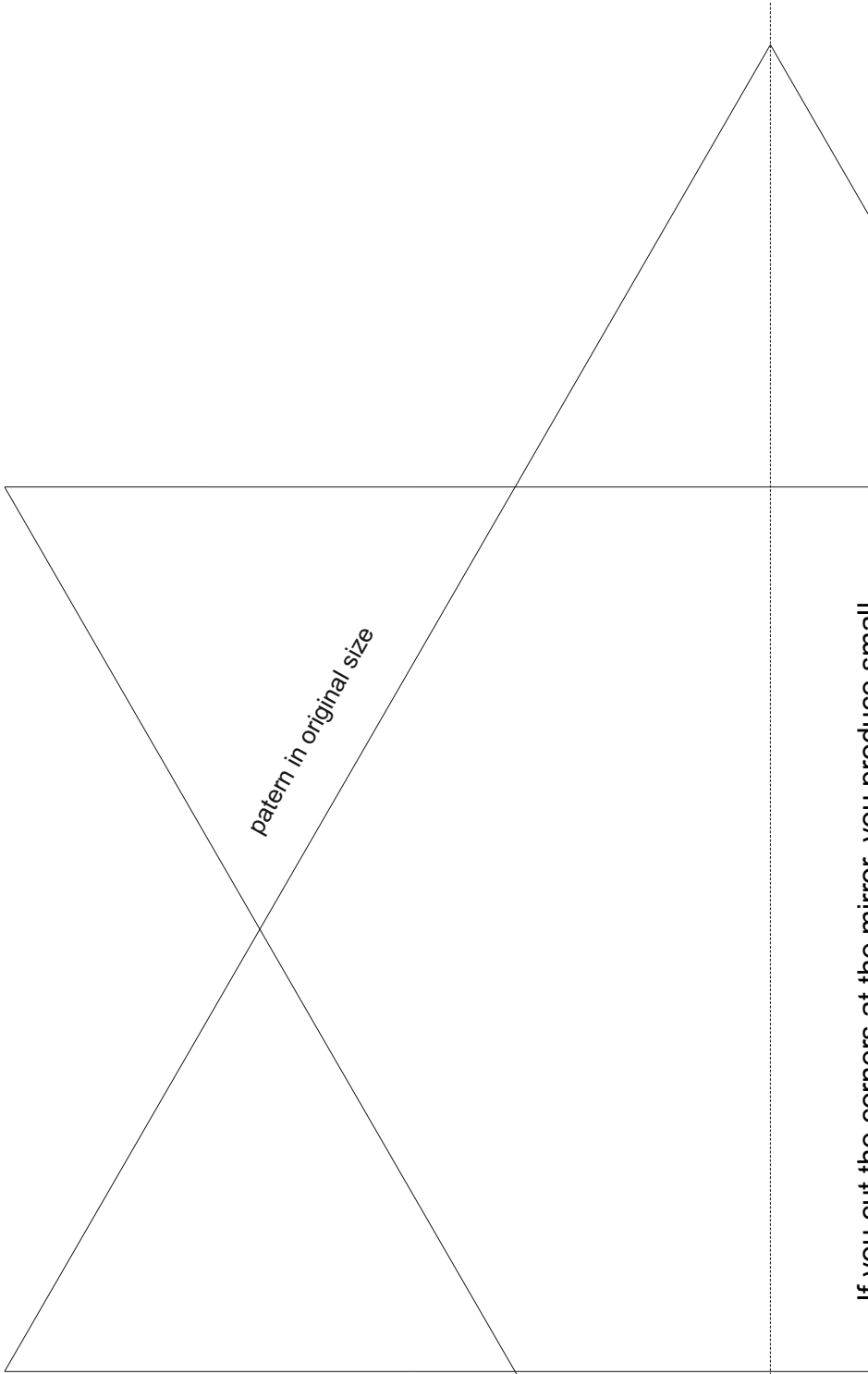
pattern in original size





Solder all around at the top a wire for reinforcement.





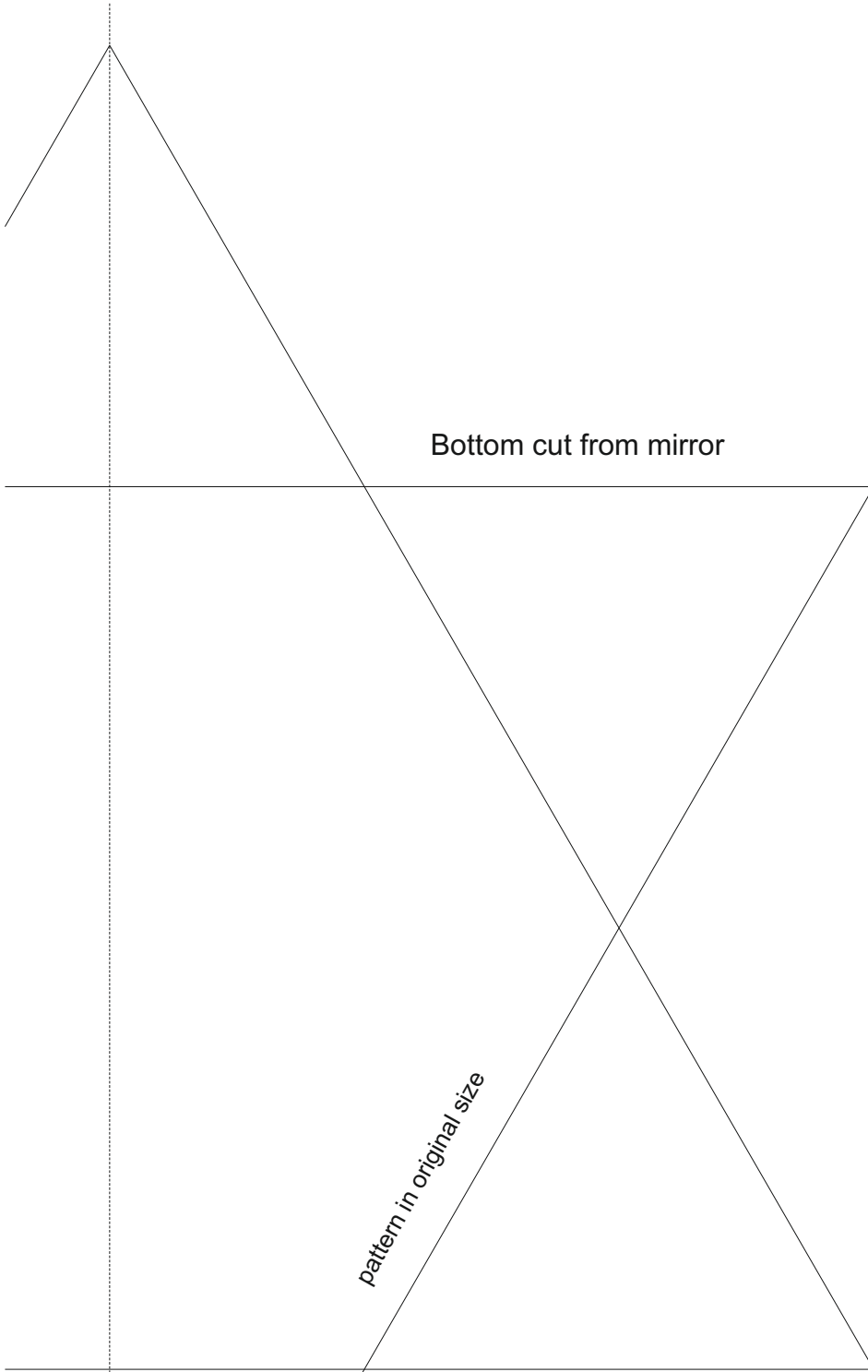
If you cut the corners at the mirror, you produce small air holes in the bottom and later the candle burns better.

I recommend to coat the mirror edge with mirror protection varnish. It is also useful to make the copper foil overlap at the mirror's coated side a little wider.

Bottom cut from mirror

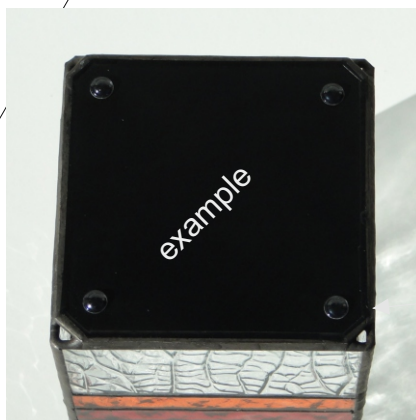


here the version as a floor lamp with electric light and outlet for the power chord. for more details please go to the chapter " floor lamps "



After the final cleaning of the light I recommend to paint the bottom - this looks more professional than the usual mirror coating.

The rubber bumps ensure the perfect stand even on sensitive ground.



bumps