

Flower vase " Natural "

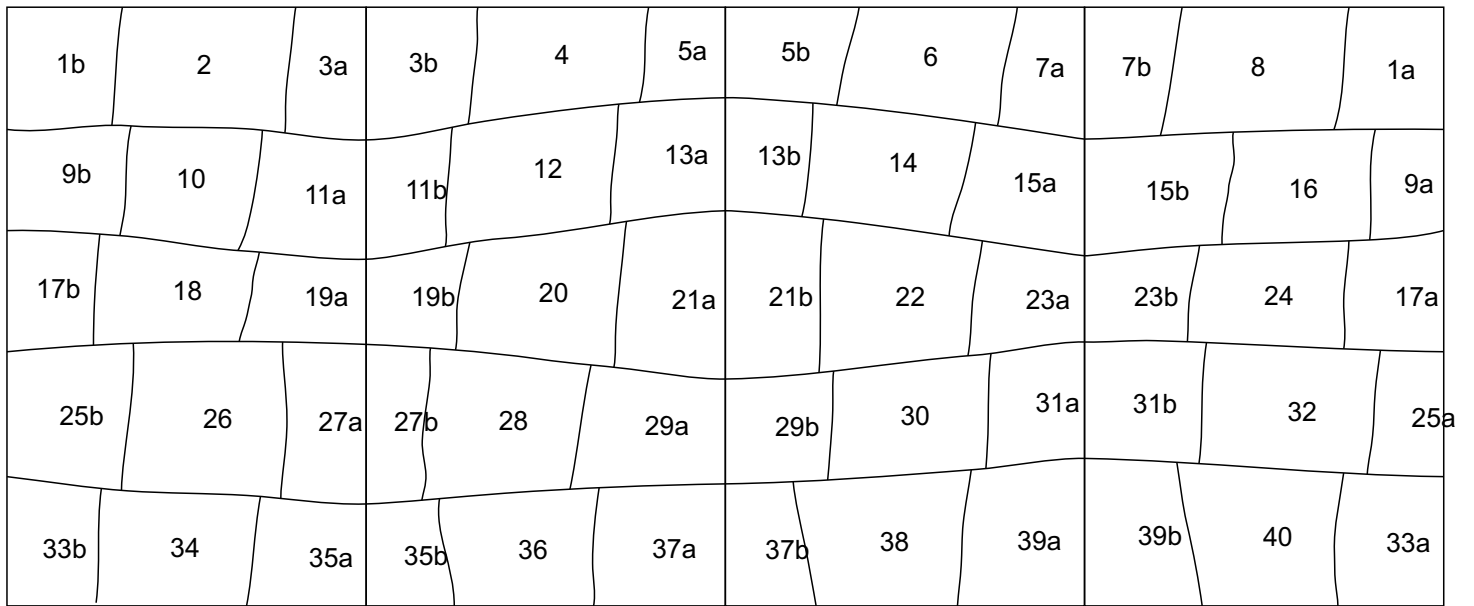


Flower vase " Natural "

size approx. 12 x 12 x 20 cm / 5 x 5 x 8"

If you seal the vase from the inside with synthetic resin and work very accurate, you can fill it with water and then use for real flowers.

Material as shown: alternating creme Bullseye 0420-30F and pink Bullseye 0421-30F, mirror for the bottom.



Glas selection as in example:

creme: Bullseye 0420-30F

pink: Bullseye 0421-30F

mirror for the bottom

Glass selection example:

For the floor take the mirror, so you can either use this vase as candle holder.

I recommend to coat the mirror edge with mirror protection varnish.

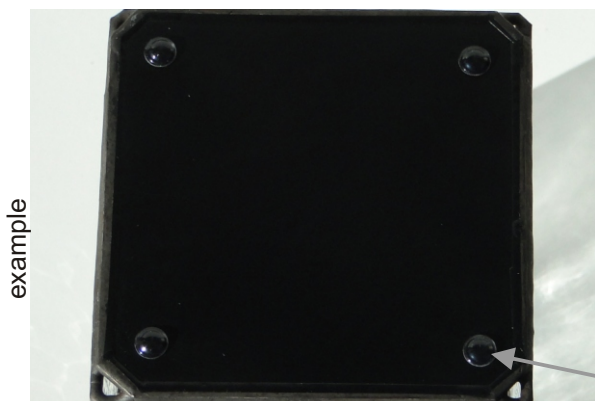
It is also useful to make the copper foil overlap at the mirror's coated side a little wider.

Only if you use the vase as candle holder or for synthetic flowers:

If you cut the corners at the mirror, you produce small air holes in the bottom and later the candle burns better.



The vase is also suitable as candle holder



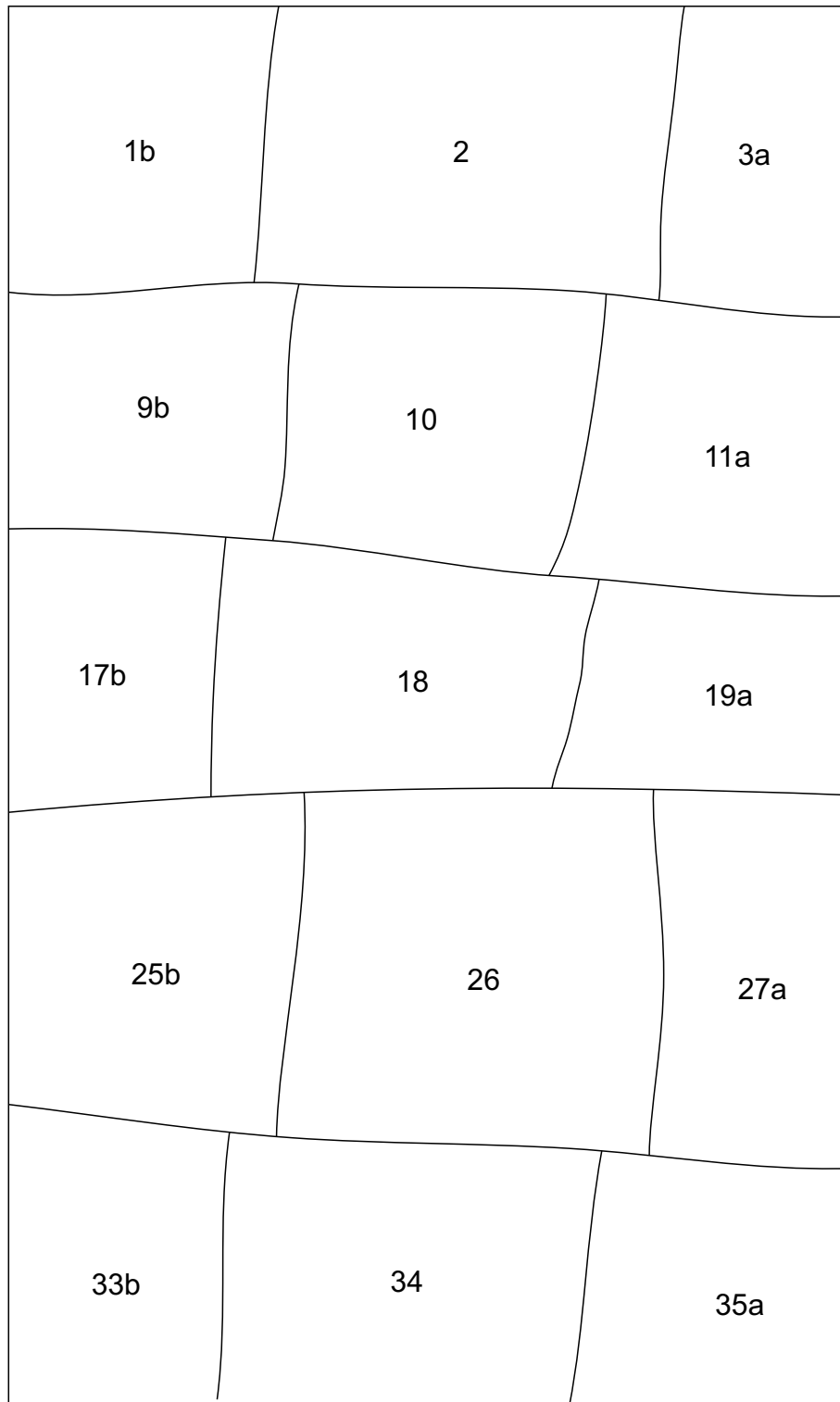
example

After the final cleaning of the vase I recommend to paint the bottom - this looks more professional than the usual mirror coating.

The rubber bumps ensure the perfect stand even on sensitive ground.

bumps

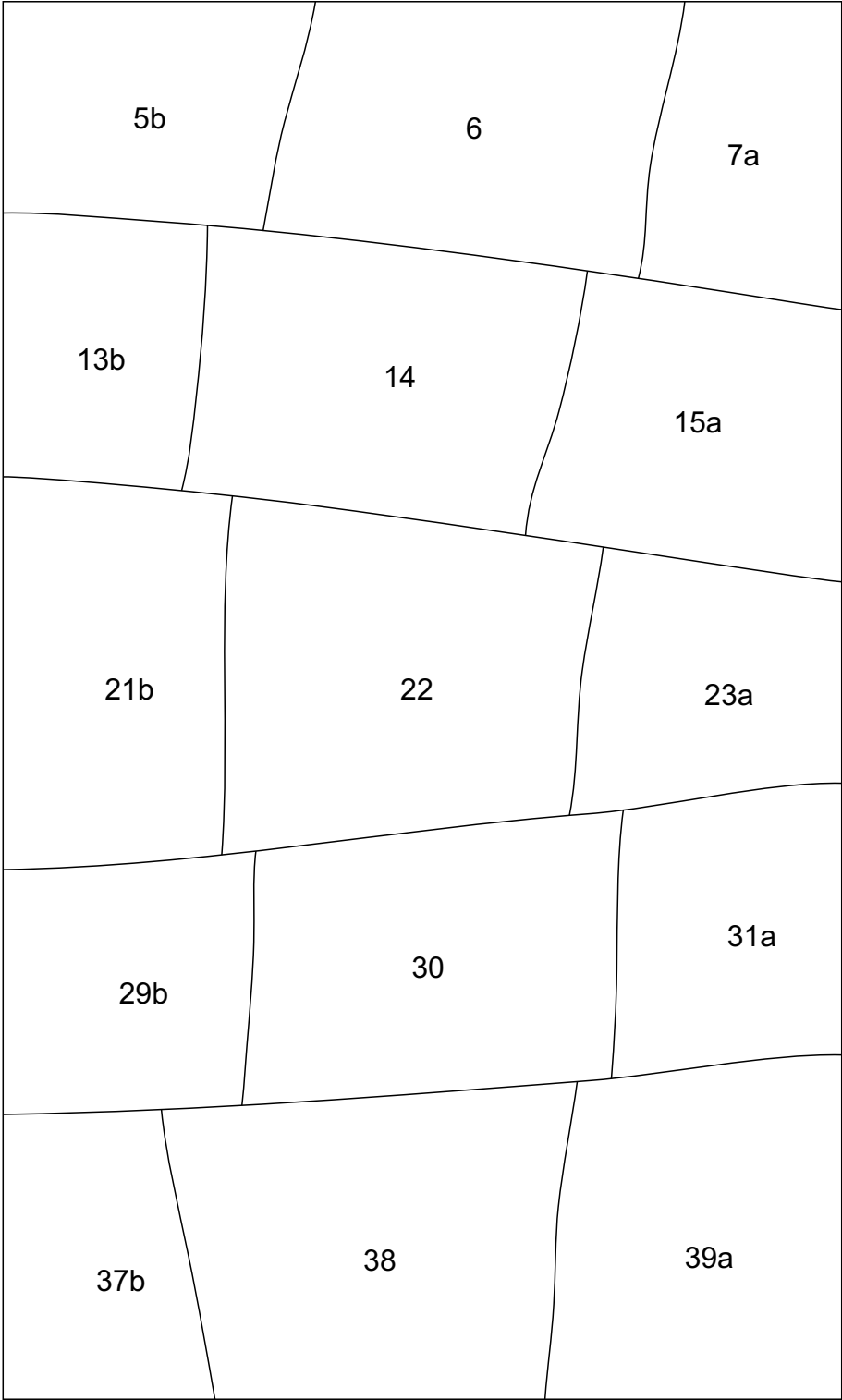
pattern in original size



pattern in original size



pattern in original size



pattern in original size

