

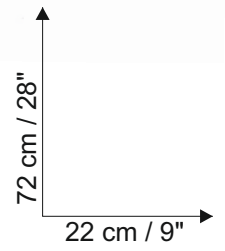
Light Object - Pillar

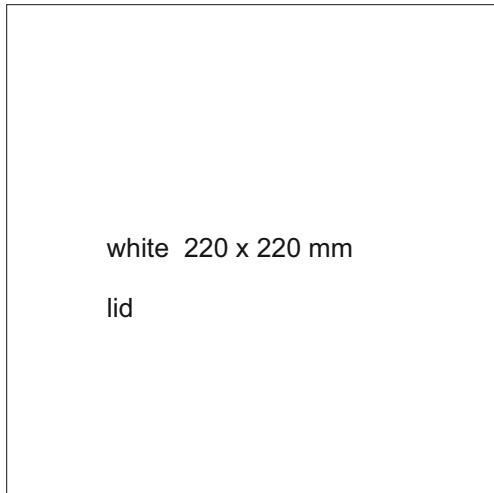


weiß 220 x 120 mm						
white 35 x 450 mm	colored glass 25 x 450 mm	white 20 x 450 mm	colored glass 60 x 450 mm	white 20 x 450 mm	colored glass 25 x 450 mm	white 35 x 450 mm
white 220 x 150 mm						



pillar

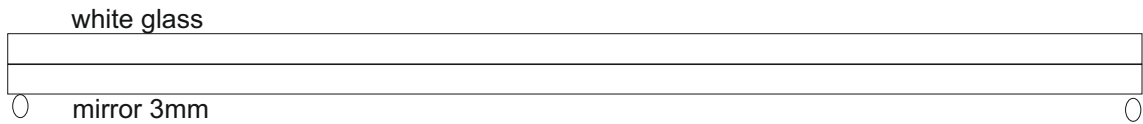




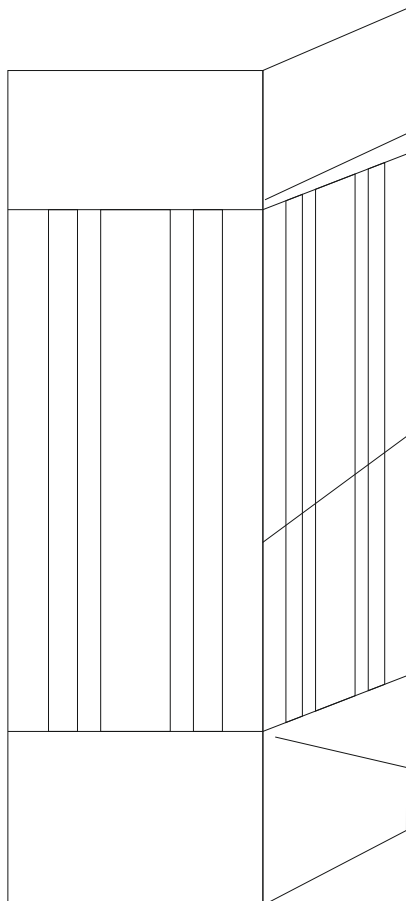
The lid

Cut the lid once you have completed soldering the actual luminaire. Measure the opening to the light and accordingly cut the lid.

The lid will not soldered onto the side parts! Place the lid only. You can solder 4 eyelets in the corners, this is to fix the lid.



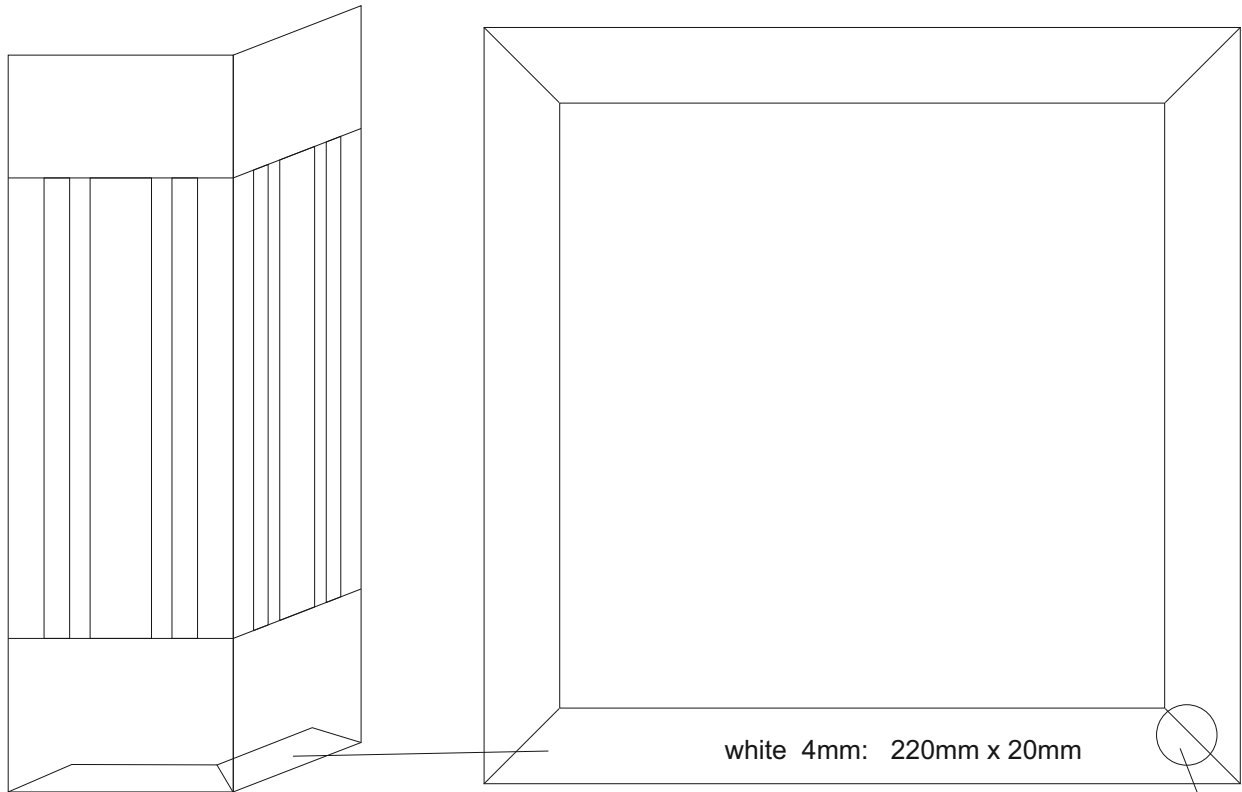
The lid is made of white sheet of glass and an equally large piece of silver mirror (3mm). These are wrapped together with wide copper foil. The mirror shows the lamp.



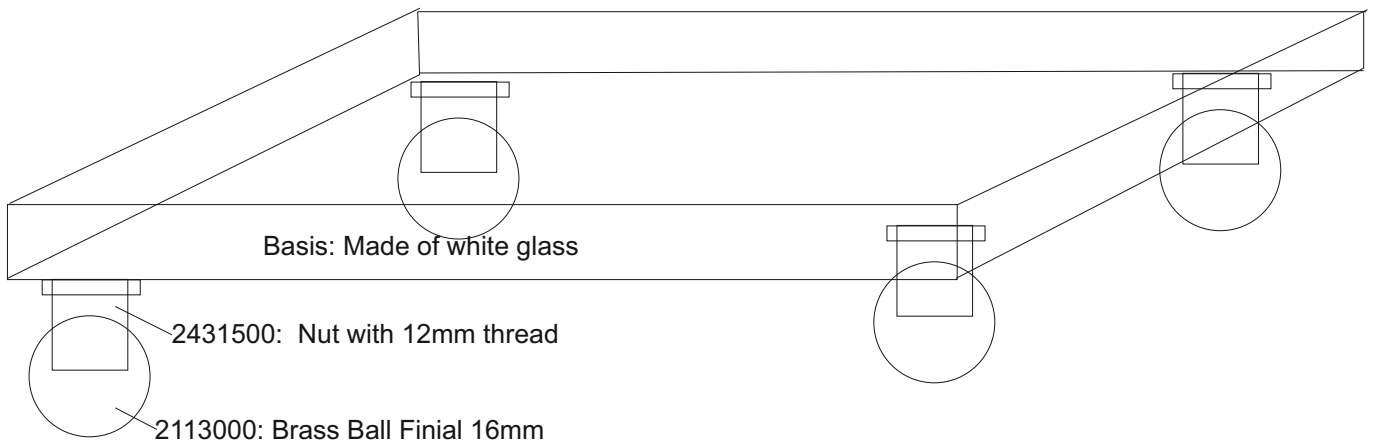
Adjust the spider inside here.
Solder the spider inside here.

As a final cleaning and to strengthening, solder onto the 4 corners each a 4 mm brass tube.

Adjust the spider inside here.
Solder the spider inside here.



From 4 parts of white glass, form the bottom inside of the pillar, a frame for reinforcement. On the diagonal solder seams solder on the brass threaded piece (2431500).



- List of materials as in this example:
SCHOTT Opalika (flashed white glass 4mm) or Spectrum white 200s
Uroboros 11-38
1 x 2415600 4-way brass spider
4 x 2431500 nut with a 12mm male thread
4 x 2113000 16mm brass ball finial