

Window Panel - 4 Seasons Autumn

© www.inspiration-for-glass.com





4 seasons - Autumn

approx. 56 x 28cm (22" x 11") plus frame

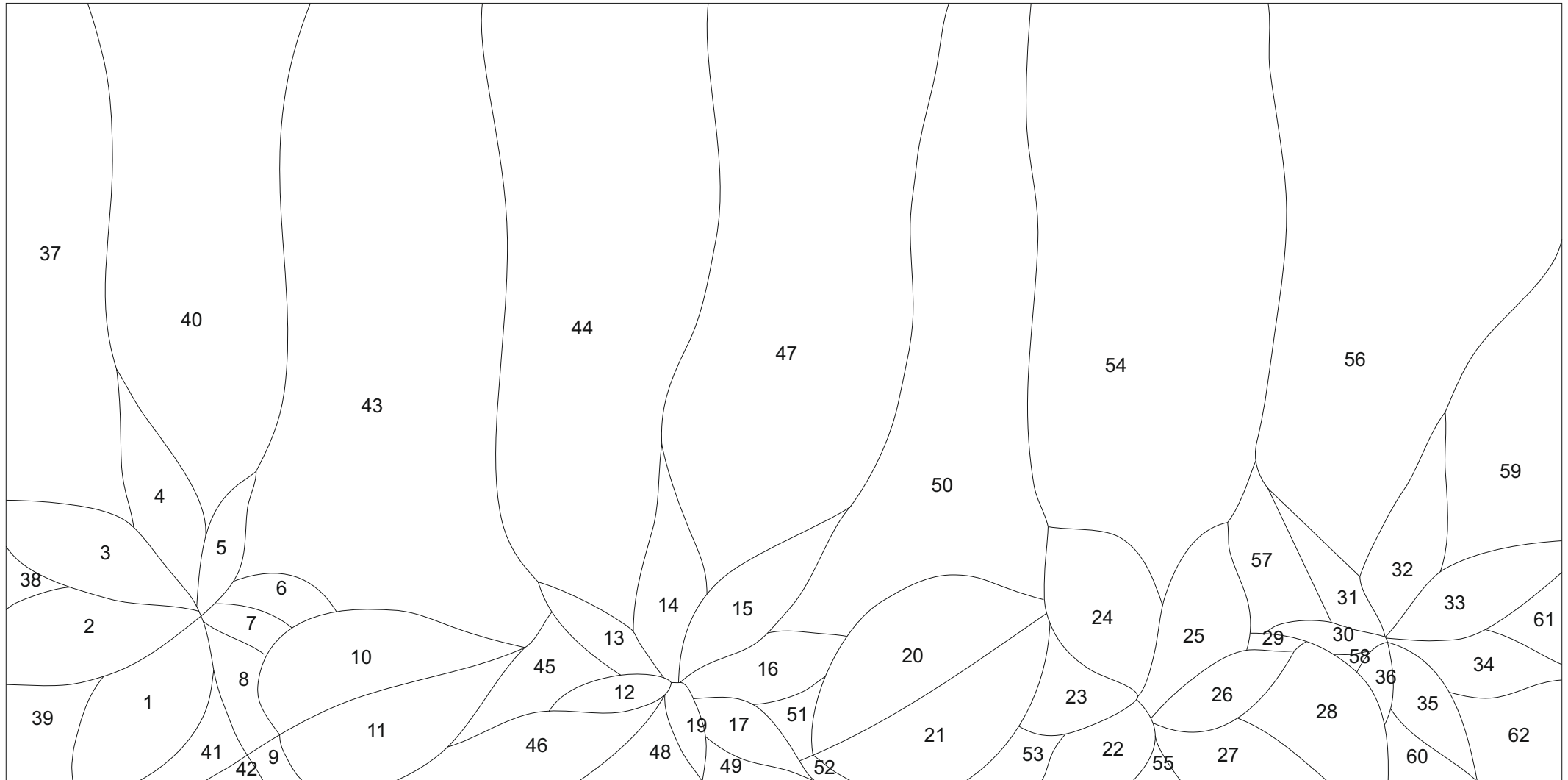
This art glass panel you can either hang in the window or put on the windowsill.

Thanks to its simple and practical framework solution you can change at any time - details on the next page...



The stainless steel glass stand you should find at your favorite glass shop (also under item # 4594600).

pattern in scale 1 : 2

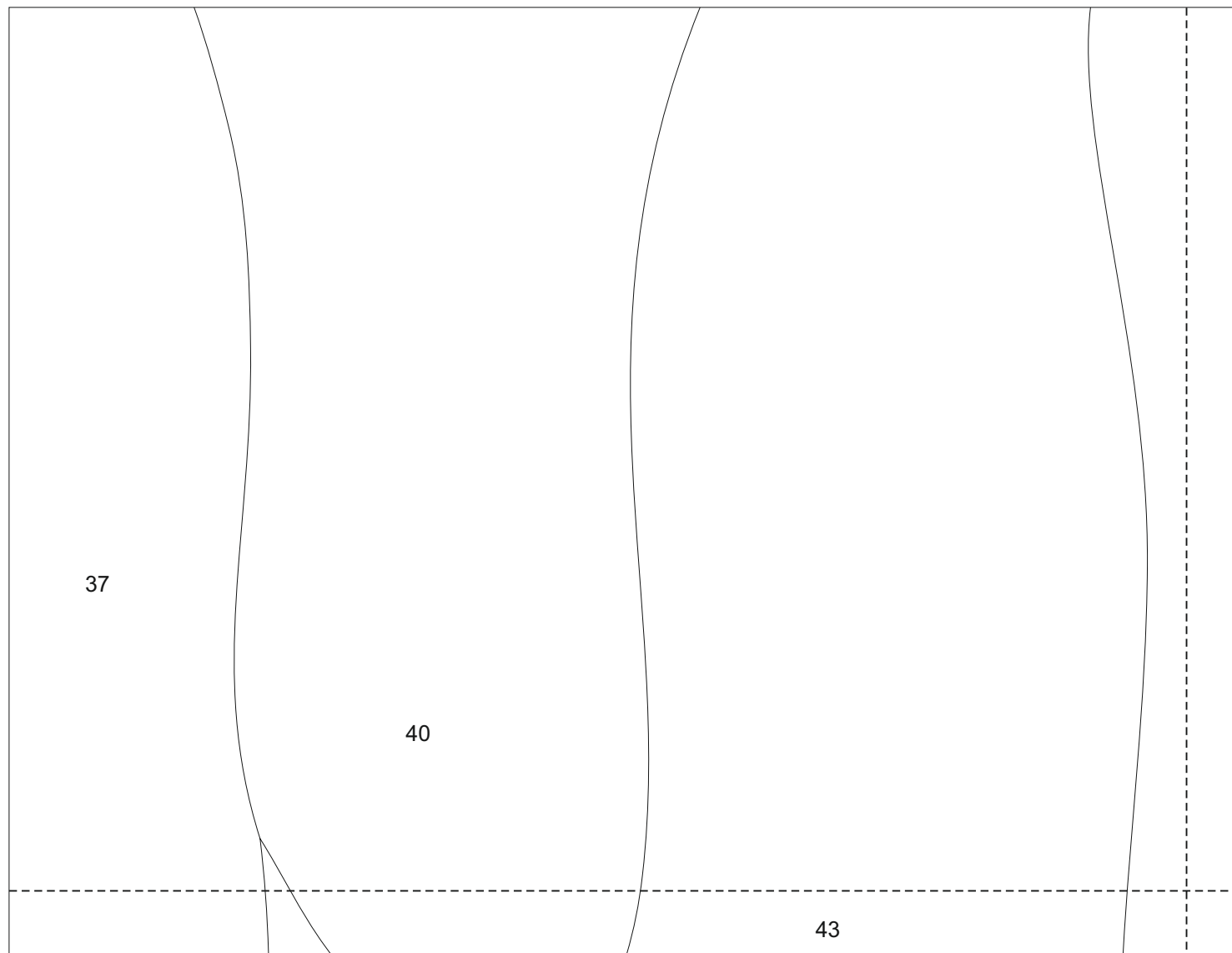


Material as shown in original: piece 1 - 9 : Spectrum 6051-83CC
 piece 10 - 11 : Spectrum 6011-83CC
 piece 12 - 19 : Spectrum 6076-83CC
 piece 20 - 21 : Spectrum 6011-83CC
 piece 22 - 26 : Spectrum 6021-86CC
 piece 27 - 29 : Spectrum 6011-83CC
 piece 30 - 36 : Spectrum 6076-83CC
 piece 37 - 62 : Uroboros 11-45

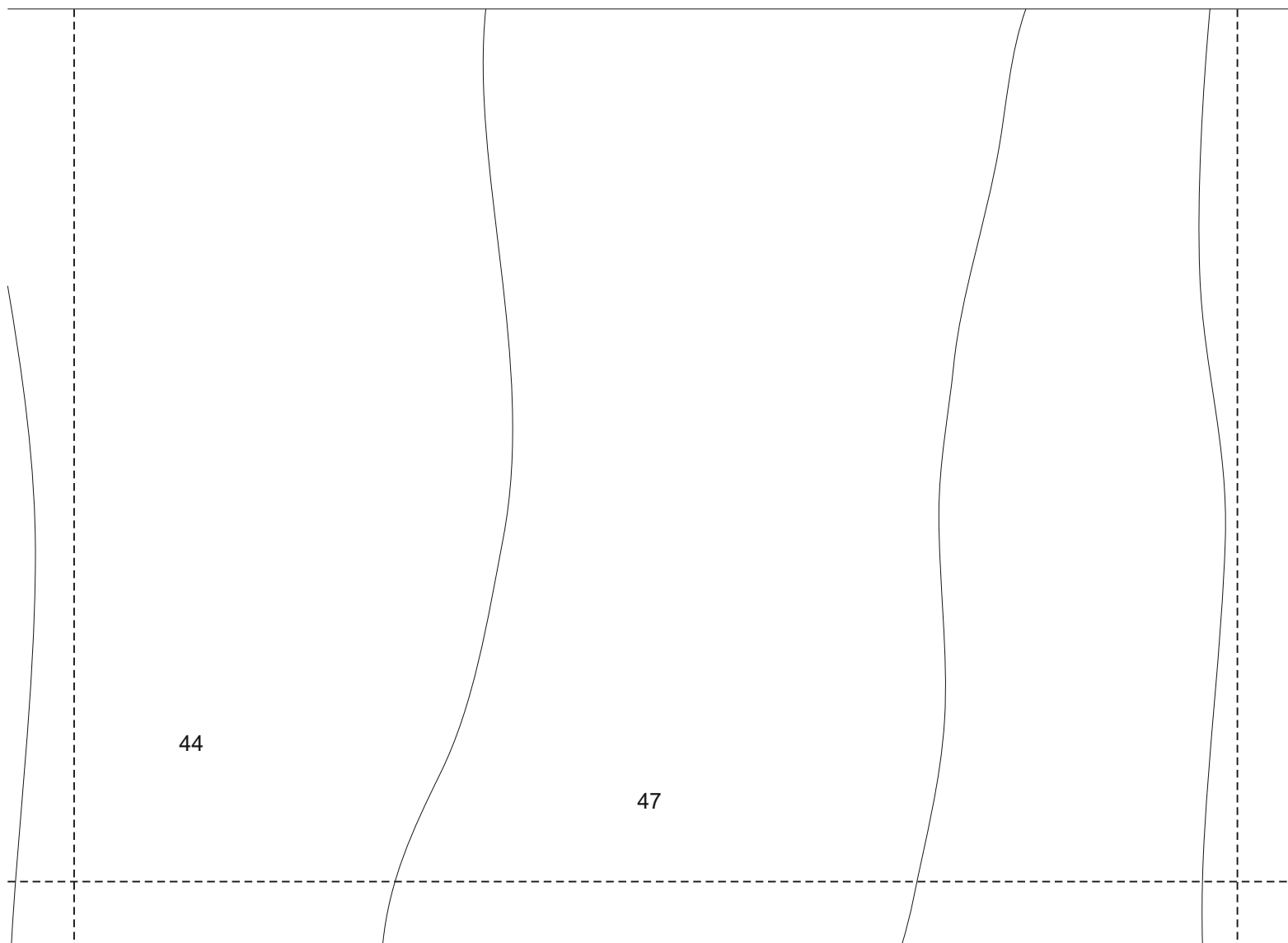
I recommend 5 mm brass tube for the frame.
 This can be soldered easy, is stable and
 automatically forms a clean edge.
 Leave the pipe ends open (see figure).
 To hang the panel you pull a cord
 through the pipe.



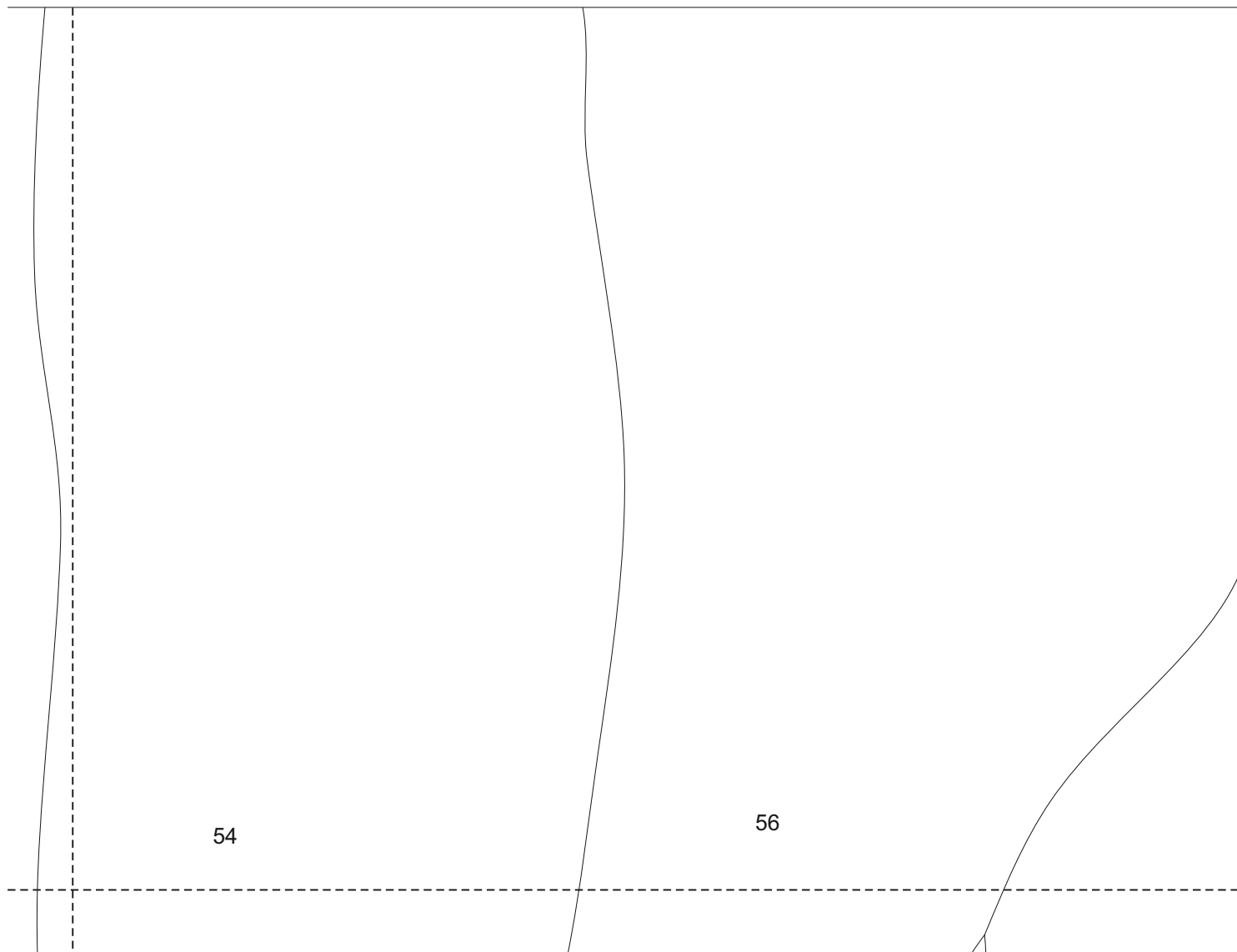
pattern in original size



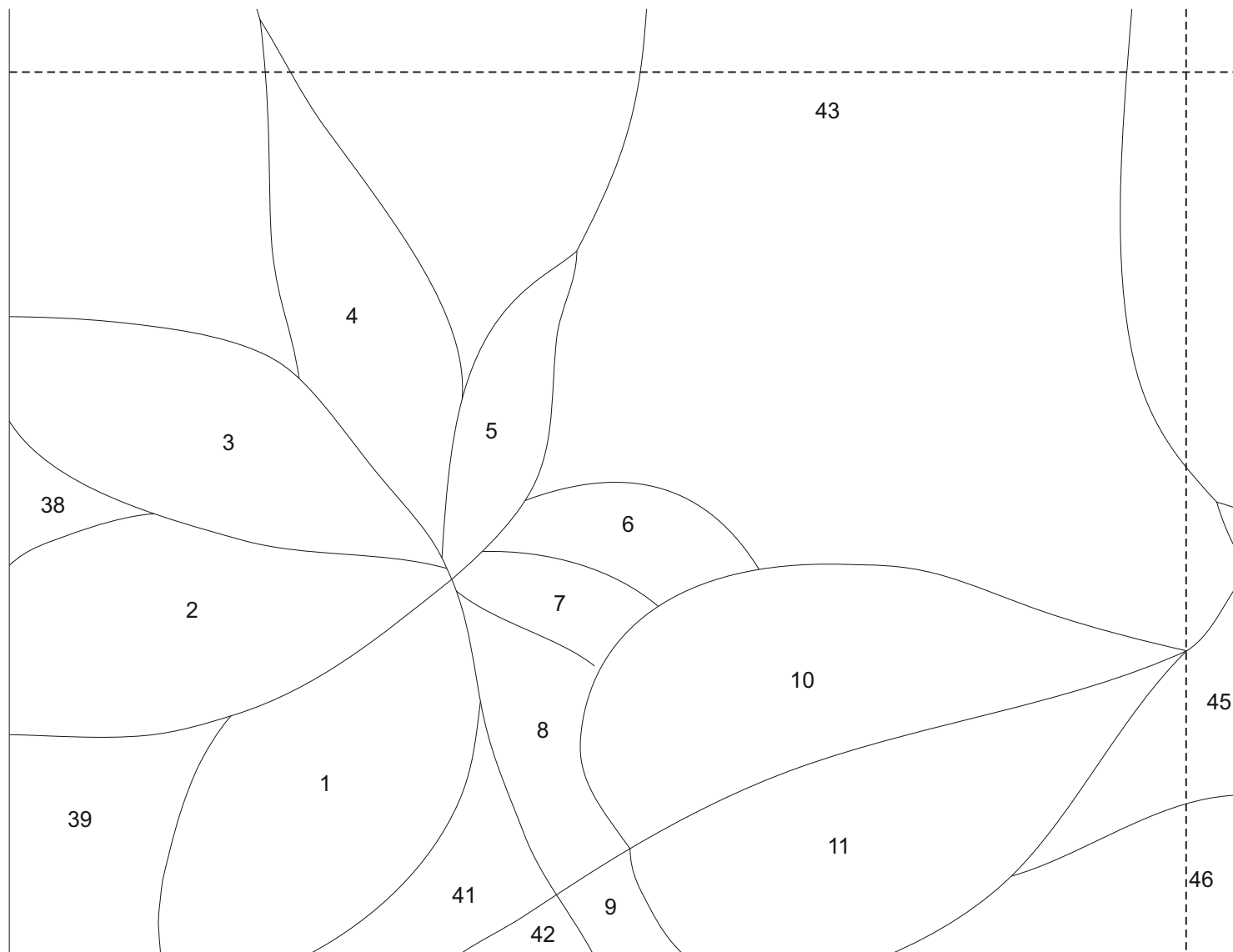
pattern in original size



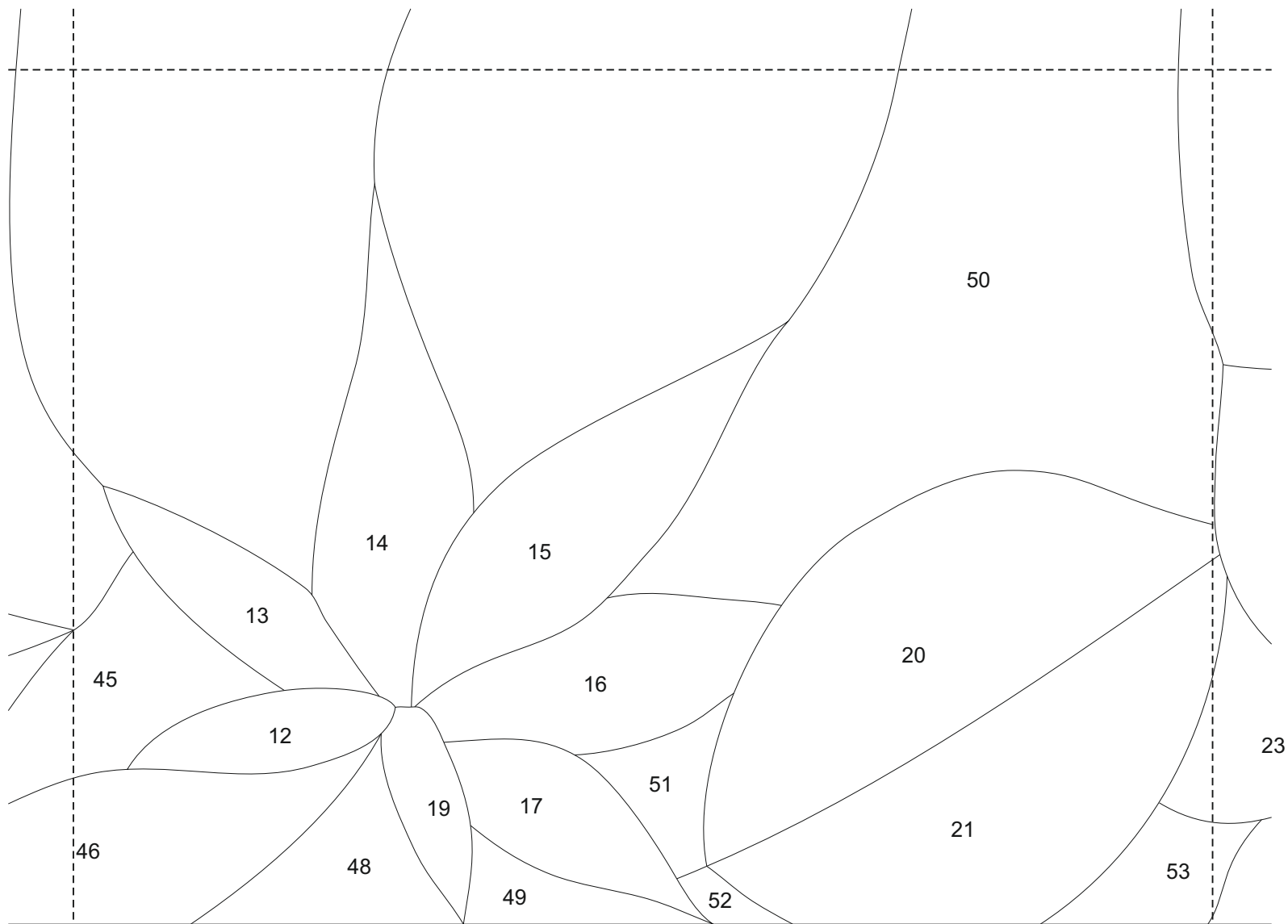
pattern in original size



pattern in original size



pattern in original size



pattern in original size

