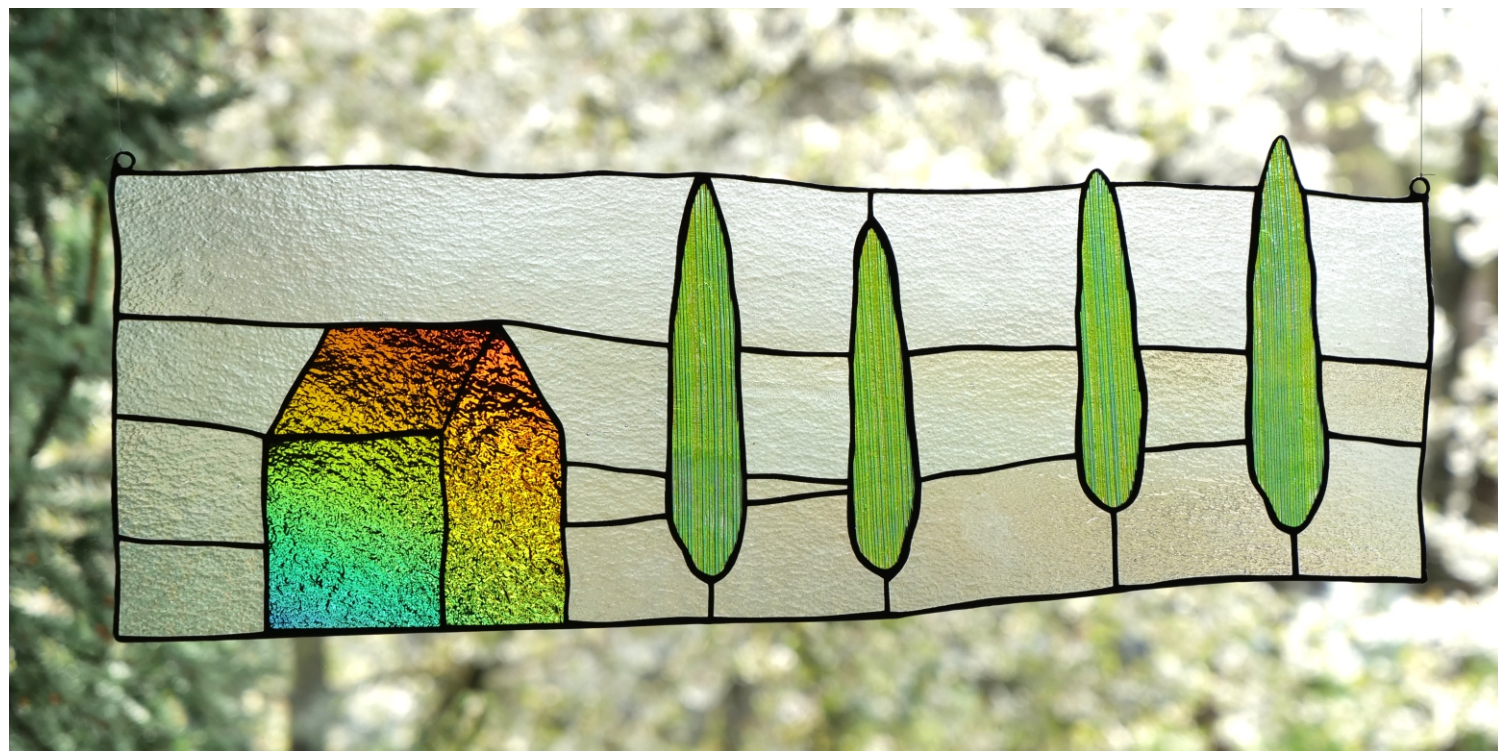


# Window Panel - Tuscany - without frame

© [www.inspiration-for-glass.com](http://www.inspiration-for-glass.com)



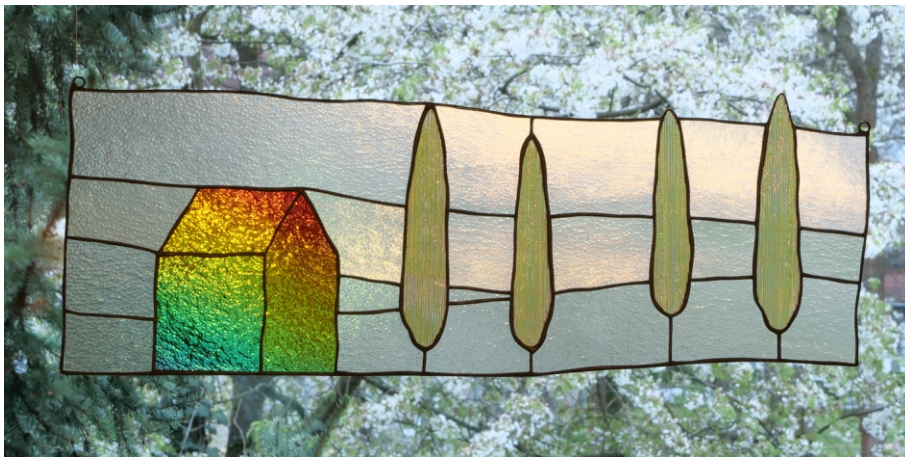
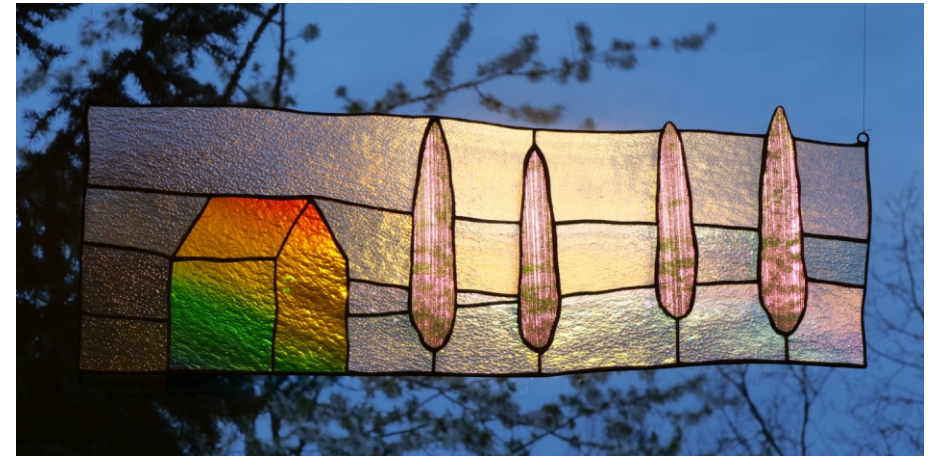
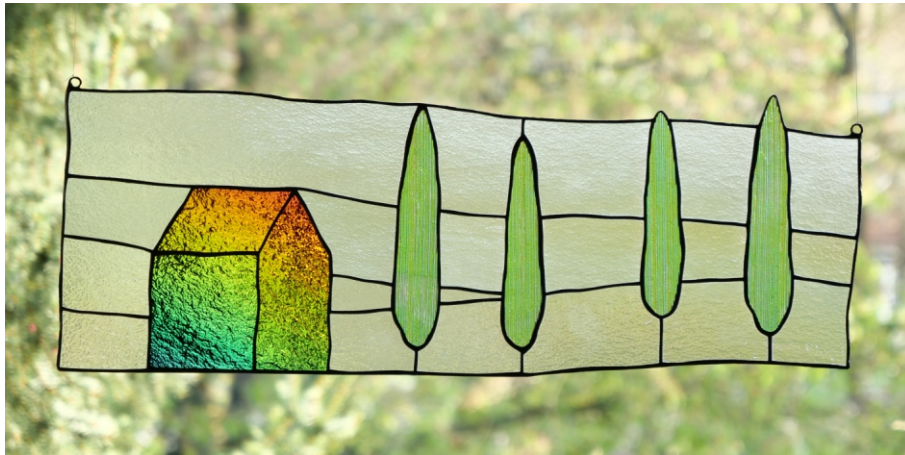


Transparent dichroic glass in transmitted and reflected light.

Dichroic TRANSPARENT glass is characterised by its ability to reflect or transmit different colours depending on the viewing angle.

In transmitted light, it appears in one colour, while this impression can change in incident light, so that the glass presents a different shade of colour under different lighting conditions and viewing angles. viewing angles, the glass presents a different colour tone in each case. This fascinating interaction of light and colour is created by the special coating of the glass, which splits the light into different spectra and thus creates the impression of a constantly changing colour effect.

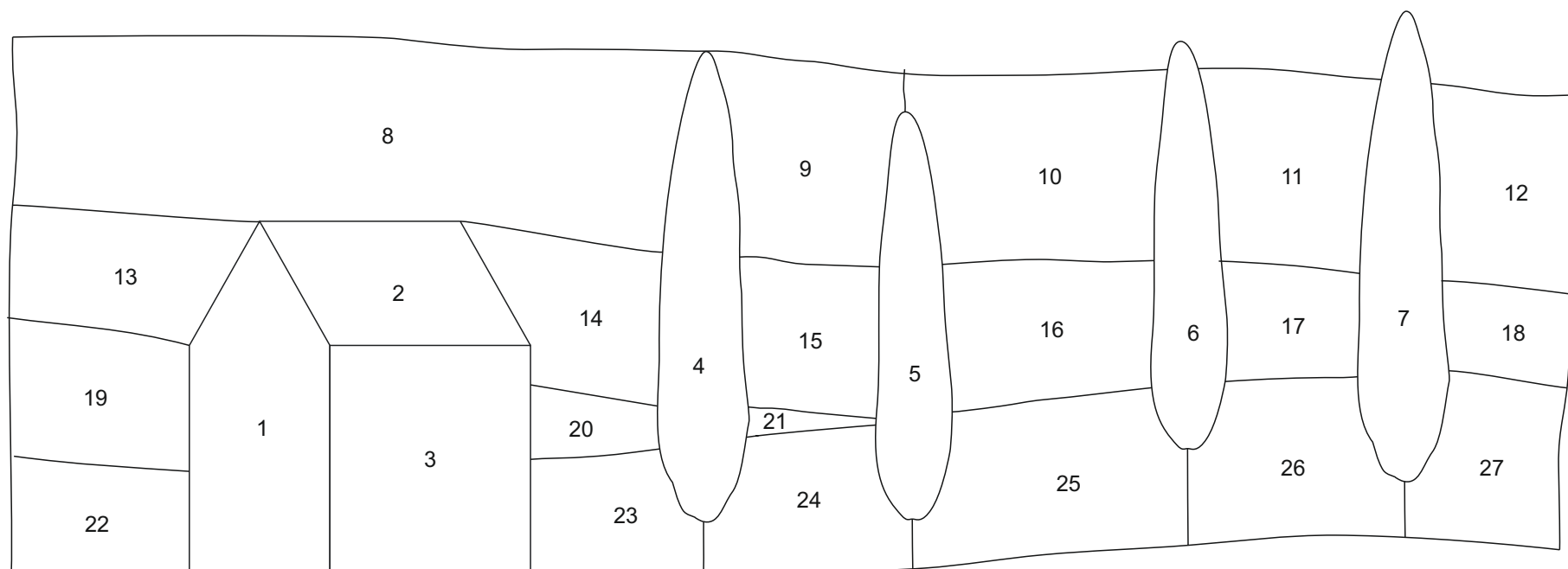
The house is made of dichroic on a black base glass and the trees are made of transparent dichroic glass.



Transmission

Reflexion

Pattern in scale 1 : 2,5



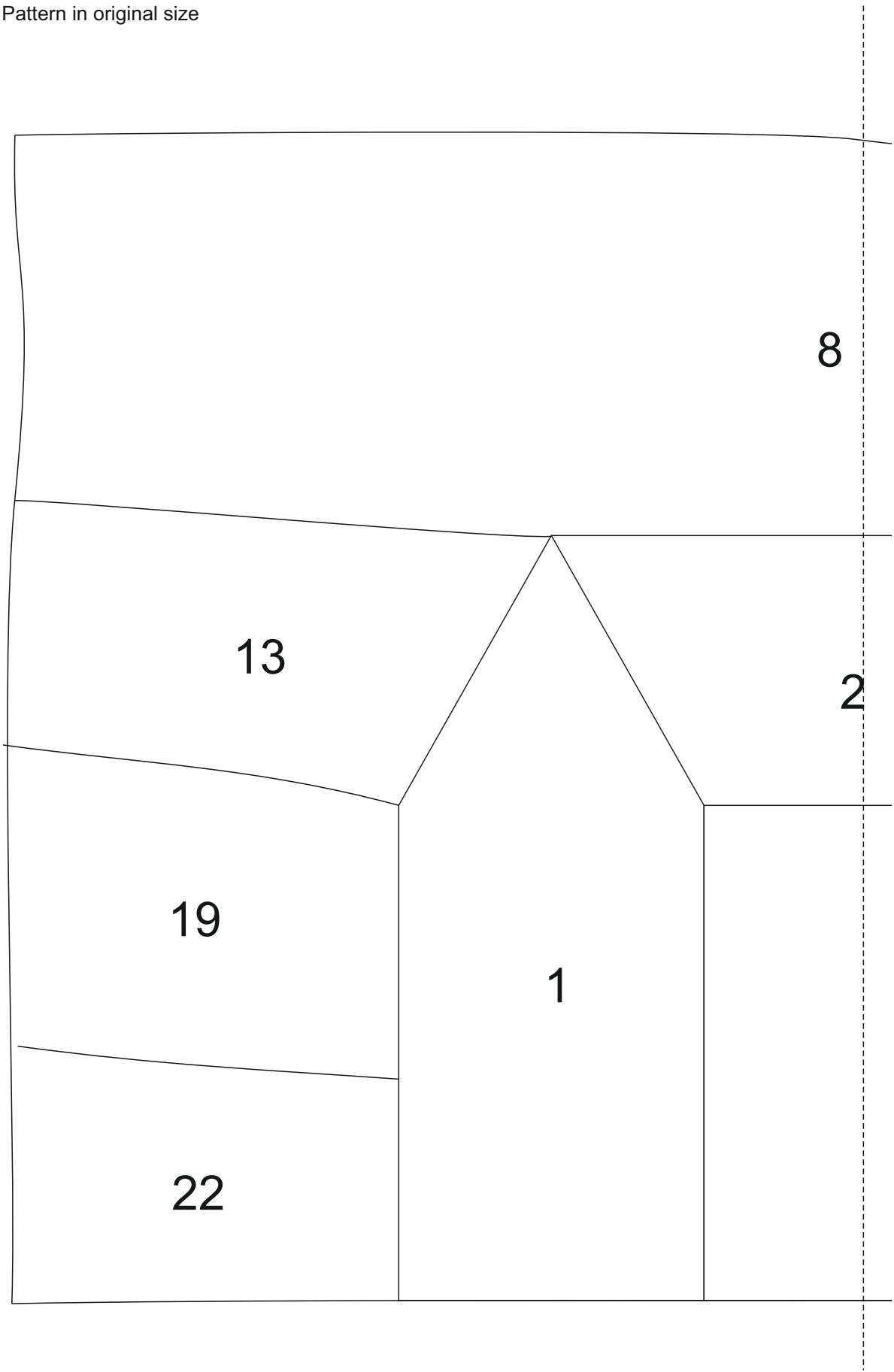
Material as in the original: piece 1 - 3 : Dichroic Rainbow on black  
 piece 4 - 7 : Dichroic transparent with texture  
 piece 8 - 27 : Bullseye 1101-31 F iridescent

As a frame, I recommend copper braid inserted into the soldered seam all the way round. This provides a frame that is adapted to the slim design - visually no frame is noticeable and forms a stable finish.

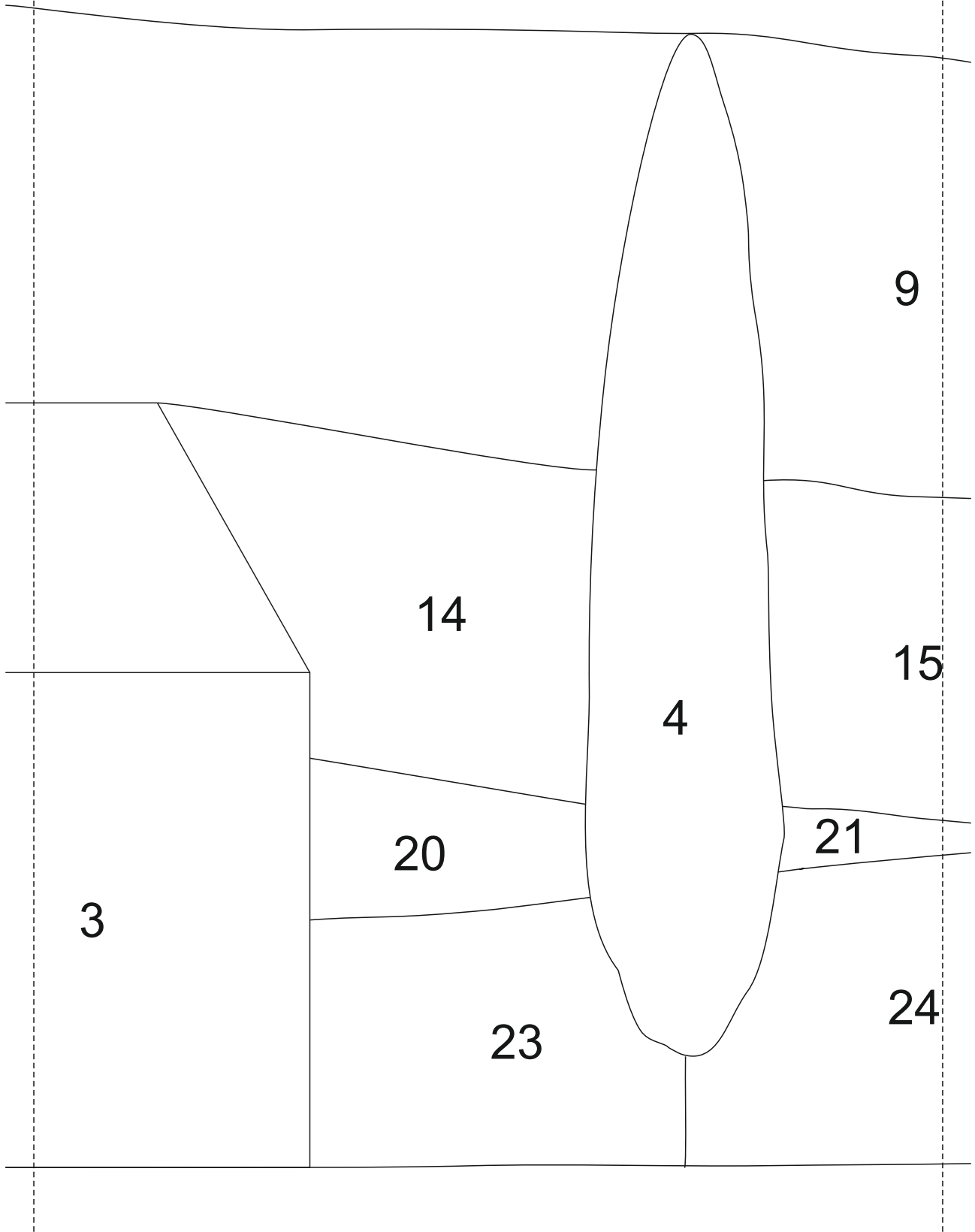
For suspension, bend two eyelets with bar made of 2mm brass tube and solder these into the frame.



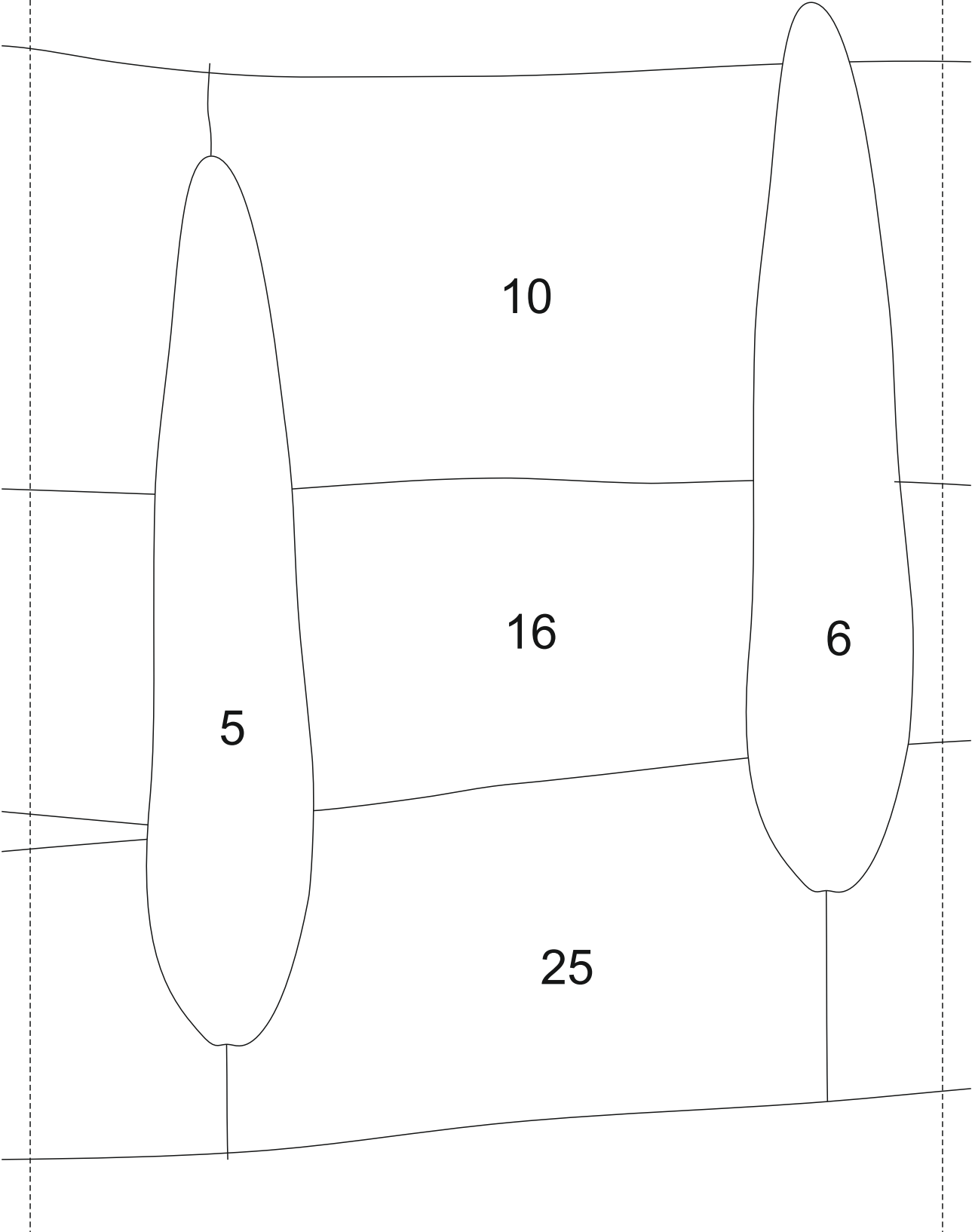
Pattern in original size



Pattern in original size



Pattern in original size



Pattern in original size

